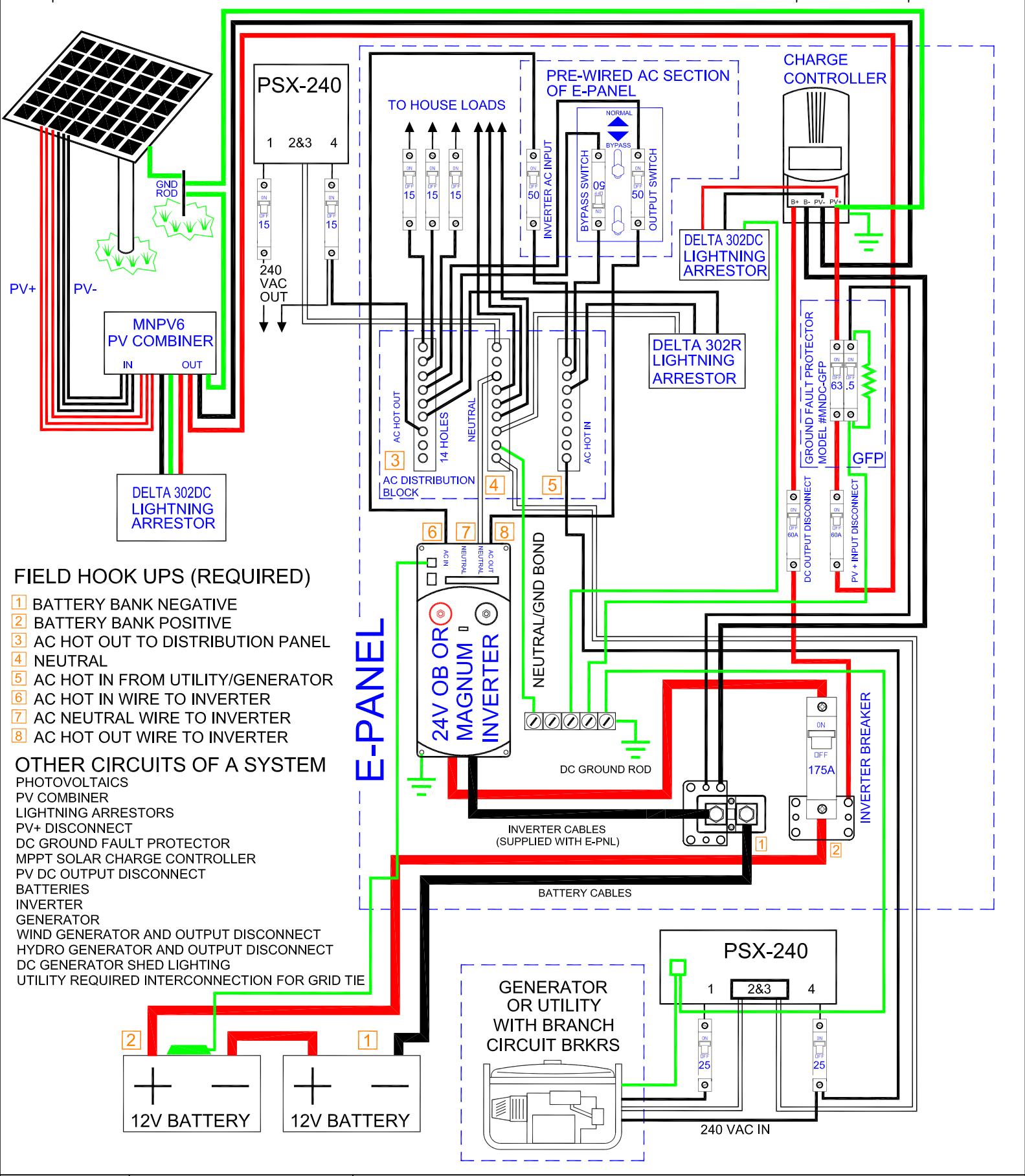


| REV | DESCRIPTION | DATE | APPROVED |
|-----|-------------|------|----------|
|-----|-------------|------|----------|



FIELD HOOK UPS (REQUIRED)

- 1 BATTERY BANK NEGATIVE
- 2 BATTERY BANK POSITIVE
- 3 AC HOT OUT TO DISTRIBUTION PANEL
- 4 NEUTRAL
- 5 AC HOT IN FROM UTILITY/GENERATOR
- 6 AC HOT IN WIRE TO INVERTER
- 7 AC NEUTRAL WIRE TO INVERTER
- 8 AC HOT OUT WIRE TO INVERTER

OTHER CIRCUITS OF A SYSTEM

- PHOTOVOLTAICS
- PV COMBINER
- LIGHTNING ARRESTORS
- PV+ DISCONNECT
- DC GROUND FAULT PROTECTOR
- MPPT SOLAR CHARGE CONTROLLER
- PV DC OUTPUT DISCONNECT
- BATTERIES
- INVERTER
- GENERATOR
- WIND GENERATOR AND OUTPUT DISCONNECT
- HYDRO GENERATOR AND OUTPUT DISCONNECT
- DC GENERATOR SHED LIGHTING
- UTILITY REQUIRED INTERCONNECTION FOR GRID TIE



14000 BURN RD
ARLINGTON, WA
98223 USA

DOC TITLE
E-PNL WIRING, 240 IN/OUT

DRAWN BY ROBIN GUDGEL

DOC NUMBER
11-03-07

E-PANELWIRE240 INrevF1DWG