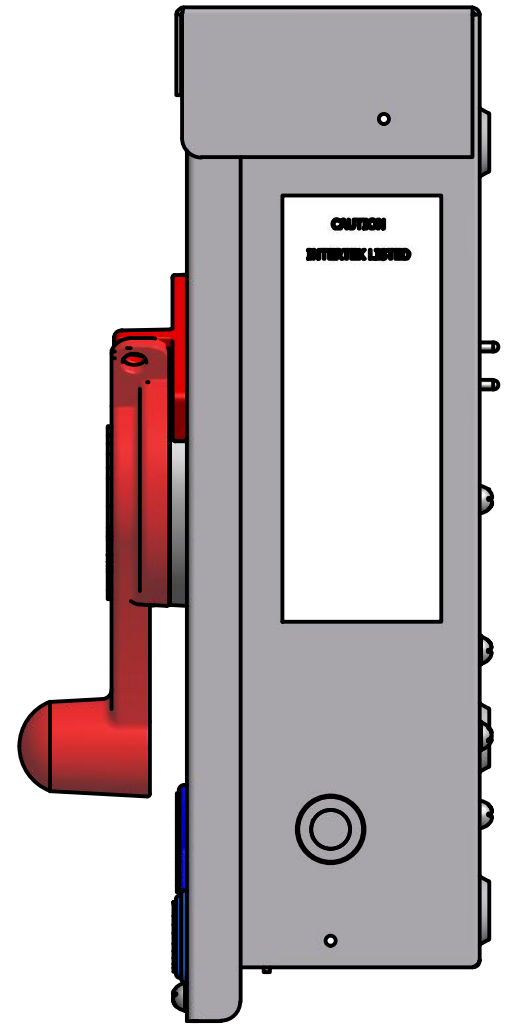
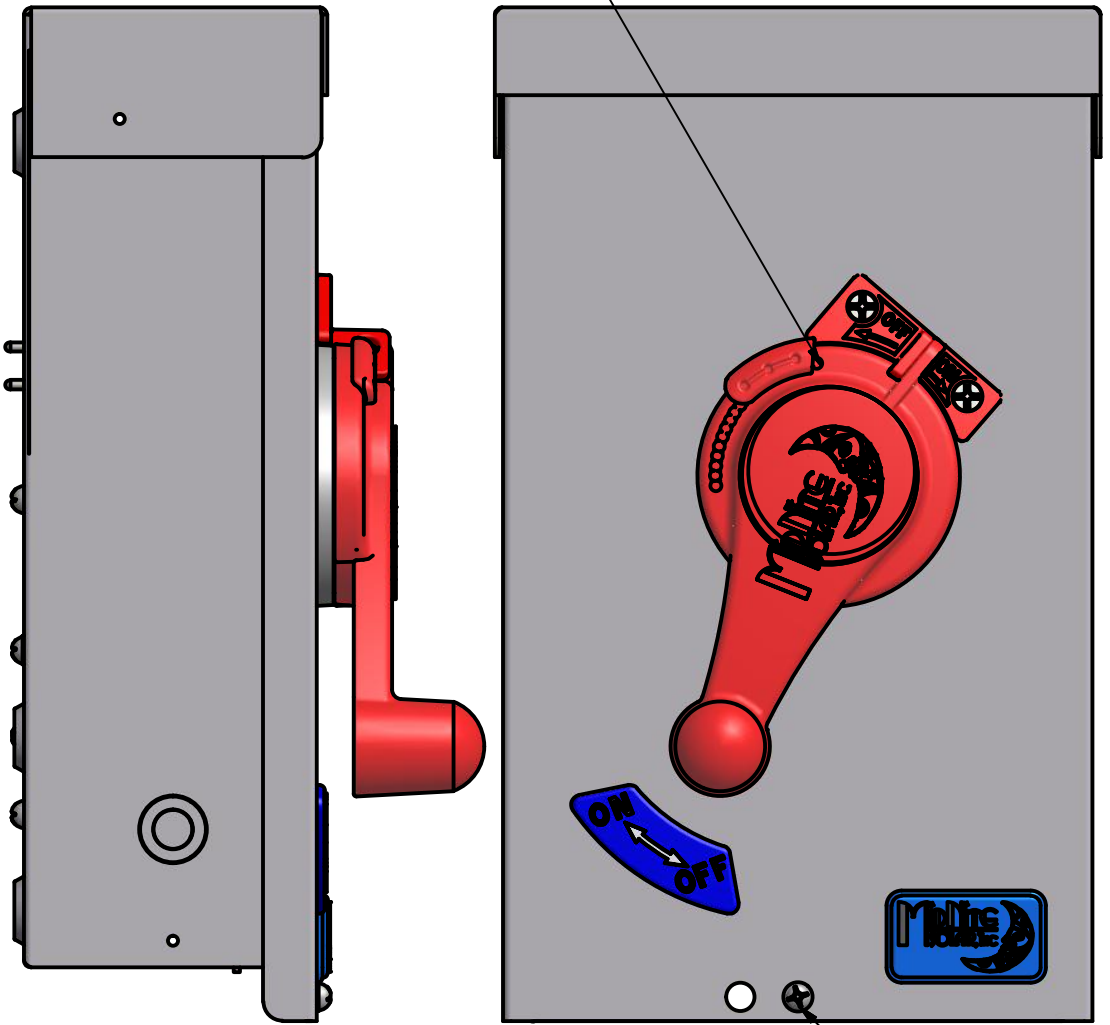


REVISION HISTORY			
REV.	DESCRIPTION OF CHANGE	DATE	SIGN
A	RELEASED FOR PRODUCTION	1/28/11	RAQ

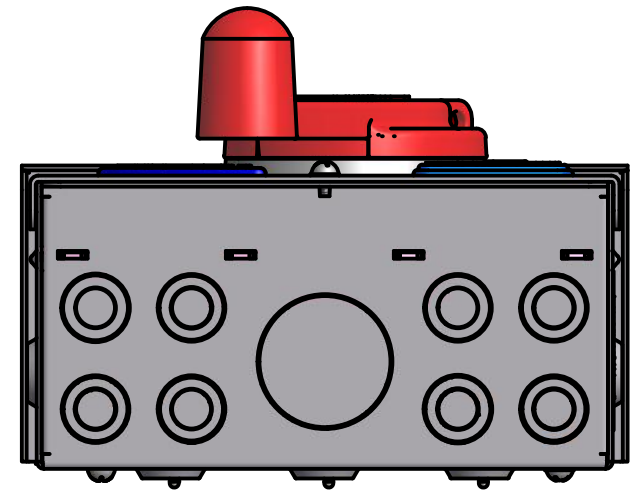
NOTE THAT THE POSITION OF STOP IS LOCATED USING THE SINGLE HOLE AS A PLACEMENT GUIDE.




SEE SHEET 3 FOR P/N OF SCREW AND WASHER

PARTS LIST			
ITEM	QTY	PART NUMBER	DESCRIPTION
29	1	MNPV6 DISCO FRONT COVER ASSY	MNPV6 DISCO FRONT COVER ASSY
30	1	MNPV6 DISCO CHASSIS ASSY	MNPV6 DISCO CHASSIS ASSY

NOTES:
 1) THIS ASSEMBLY IS BROKEN DOWN INTO TWO ASSEMBLIES:
 PAGE 2 IS THE FRONT COVER ASSEMBLY AND ASSEMBLY NOTES
 PAGE 3 IS THE CHASSIS ASSEMBLY AND ASSEMBLY NOTES



ALL TOLERANCES, UNLESS OTHERWISE STATED: x.xxx= +/-0.005" x.xx= +/-0.01" x.x= +/-0.05" ALL ANGLES = +/- 1° UNLESS OTHERWISE STATED		DRAWN Bob Q	6/20/2011
MATERIAL:		CHECKED	
FINISH:		QA	
PROCESS:		MFG	
STANDARDS:		APPROVED	

MIDNITE SOLAR, INC 

TITLE
MNPV6 DISCO

SIZE B	PROJECT: MNPV6 DISCO	DWG NO MNPV6	REV A
-----------	-------------------------	-----------------	----------

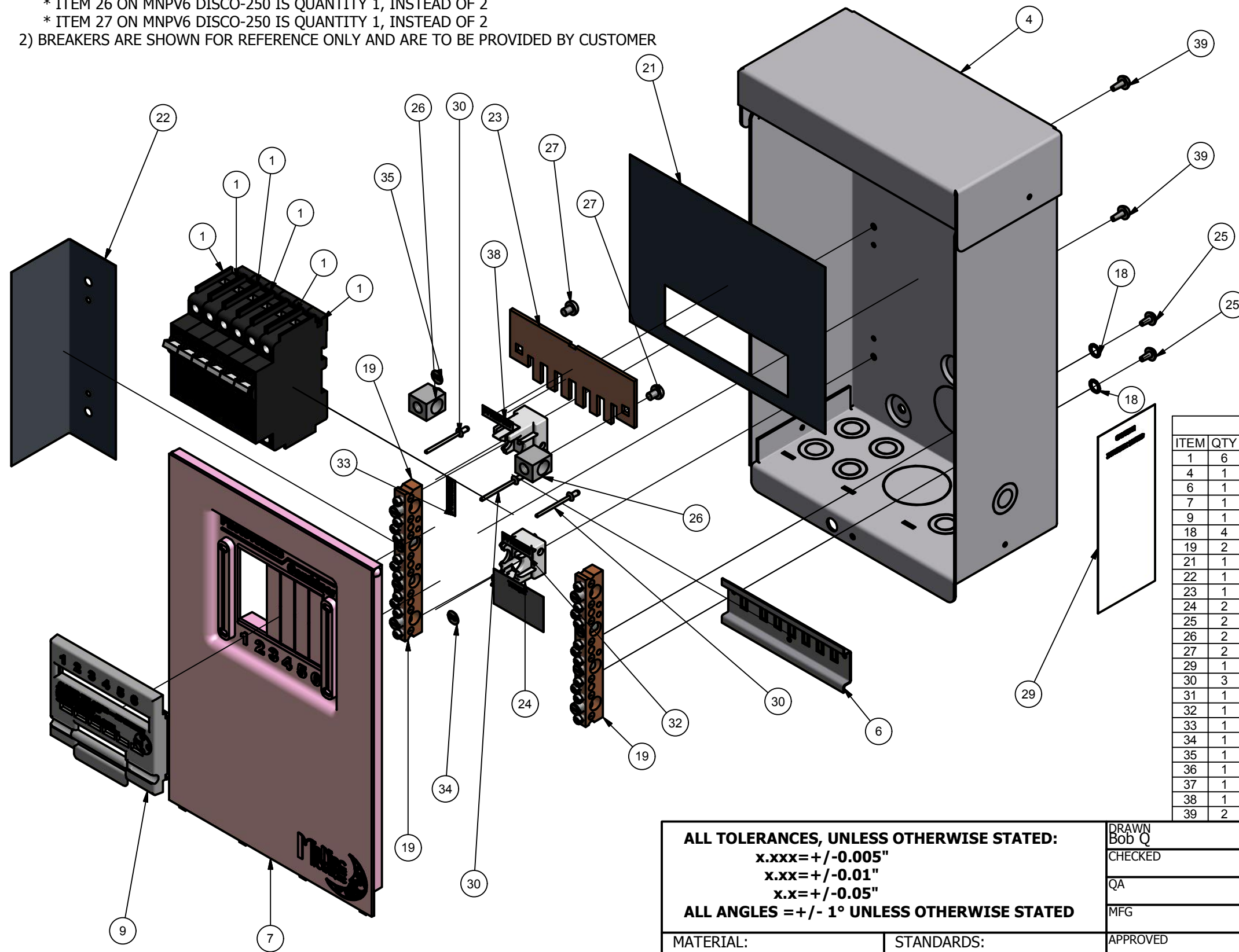
E-FILE: MNPV6 DISCO.iam

SHEET 1 OF 3

NOTES:


- 1) THIS DOCUMENT SHOWS THE ASSEMBLY OF MNPV6 DISCO AND REFERENCES MNPV6 DISCO-250
THE DIFFERENCES ARE ITEM 23, ITEM 27 AND ITEM 26.
- * ITEM 23 ON MNPV6 DISCO-250 IS 3-175-1
- * ITEM 26 ON MNPV6 DISCO-250 IS QUANTITY 1, INSTEAD OF 2
- * ITEM 27 ON MNPV6 DISCO-250 IS QUANTITY 1, INSTEAD OF 2
- 2) BREAKERS ARE SHOWN FOR REFERENCE ONLY AND ARE TO BE PROVIDED BY CUSTOMER

REVISION HISTORY			
REV.	DESCRIPTION OF CHANGE	DATE	SIGN



PARTS LIST			
ITEM	QTY	PART NUMBER	DESCRIPTION
1	6	MNEPV BREAKER	MNEPV BREAKER
4	1	3-204-1 MNPV6 CHASSIS	3-204-1 REV B MNPV6 CHASSIS
6	1	3-043-1 REV A MNPV6 DIN RAIL	3-043-1 REV A MNPV6 DIN RAIL
7	1	5-019-1 REV D MNPV6 DISCO DEADFRONT	5-019-1 REV D MNPV6 DISCO DEADFRONT
9	1	5-054-1 REV C MNPV6 DISCO SLIDER	5-054-1 REV C MNPV6 DISCO SLIDER
18	4	6-017-1 INT. STAR WASHER 10	6-017-1 INT. STAR WASHER NO.10 SS
19	2	9-037-1 REV B CAL FASTENER C71498001	9-037-1 REV B CAL FASTENER C71498001
21	1	5-021-1 REV A INSUL. DINRAIL FUSE HOLDER	5-021-1 REV A INSUL. DINRAIL FUSE HOLDER
22	1	5-022-1 REV A INSUL. PV BUSBAR	5-022-1 REV A INSUL. PV BUSBAR
23	1	3-042-1 REV A MNPV6 BUSBAR	3-042-1 REV A MNPV6 BUSBAR
24	2	5-015-2 REV D WHITE INSULATOR BUSBAR	5-015-2 REV D WHITE INSULATOR BUSBAR
25	2	6-037-1 SCREW SMS 10 X.4125 PHP SS	6-037-1 SCREW SMS 10-32 X.313 PHP SS
26	2	9-075-1 CAL FASTENER CA5SP	9-075-1 CAL FASTENER CA5SP
27	2	6-059-1 SCREW 10-32 X .250 PHP SS	6-059-1 SCREW 10-32 X .250 PHP SS
29	1	10-008-1-A CAUTION LABEL	10-008-1-A CAUTION LABEL
30	3	6-049-1 RIVET .125 X .250	6-049-1 RIVET .125 X .250
31	1	10-008-1-C TORQUE	10-008-1-C TORQUE
32	1	10-008-1-D PV POSITIVE	10-008-1-D PV POSITIVE
33	1	10-008-1-E PV NEGATIVE	10-008-1-E PV NEGATIVE
34	1	10-008-1-F DC-	10-008-1-F DC-
35	1	10-008-1-G DC+	10-008-1-G DC+
36	1	10-008-1-H GND	10-008-1-H GND
37	1	10-008-1-I EQUIPMENT GND	10-008-1-I EQUIPMENT GND
38	1	10-008-1-J PV PLUS OUT	10-008-1-J PV PLUS OUT
39	2	6-036-1 SCREW SMS 10-32 X.375 PHP SS	6-036-1 SCREW SMS 10-32 X.375 PHP SS

ALL TOLERANCES, UNLESS OTHERWISE STATED: x.xxx=+/-0.005" x.xx=+/-0.01" x.x=+/-0.05"		DRAWN Bob Q	6/20/2011
ALL ANGLES = +/- 1° UNLESS OTHERWISE STATED		CHECKED	
MATERIAL:	STANDARDS:	QA	
FINISH:		MFG	
PROCESS:		APPROVED	



MNPV6 DISCO

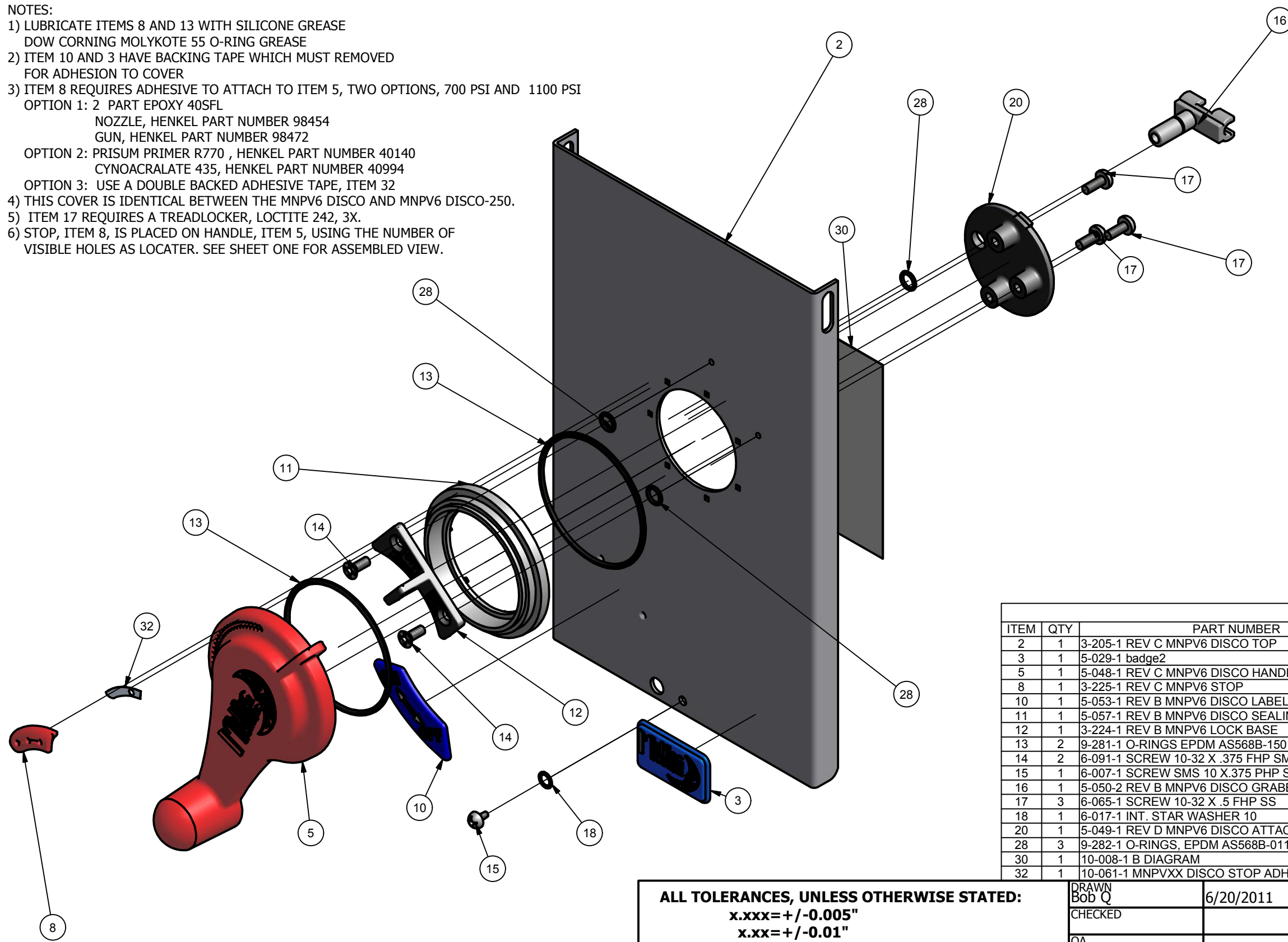
SIZE B	PROJECT: MNPV6 DISCO	DWG NO MNPV6	REV A
-----------	-------------------------	-----------------	----------

E-FILE:MNPV6 DISCO CHASSIS ASSY.iam SHEET 2 OF 3

NOTES:

- 1) LUBRICATE ITEMS 8 AND 13 WITH SILICONE GREASE
DOW CORNING MOLYKOTE 55 O-RING GREASE
- 2) ITEM 10 AND 3 HAVE BACKING TAPE WHICH MUST REMOVED
FOR ADHESION TO COVER
- 3) ITEM 8 REQUIRES ADHESIVE TO ATTACH TO ITEM 5, TWO OPTIONS, 700 PSI AND 1100 PSI
OPTION 1: 2 PART EPOXY 40SFL
NOZZLE, HENKEL PART NUMBER 98454
GUN, HENKEL PART NUMBER 98472
OPTION 2: PRISUM PRIMER R770 , HENKEL PART NUMBER 40140
CYNOACRALATE 435, HENKEL PART NUMBER 40994
OPTION 3: USE A DOUBLE BACKED ADHESIVE TAPE, ITEM 32
- 4) THIS COVER IS IDENTICAL BETWEEN THE MNPV6 DISCO AND MNPV6 DISCO-250.
- 5) ITEM 17 REQUIRES A TREADLOCKER, LOCTITE 242, 3X.
- 6) STOP, ITEM 8, IS PLACED ON HANDLE, ITEM 5, USING THE NUMBER OF
VISIBLE HOLES AS LOCATER. SEE SHEET ONE FOR ASSEMBLED VIEW.

REVISION HISTORY			
REV.	DESCRIPTION OF CHANGE	DATE	SIGN



PARTS LIST			
ITEM	QTY	PART NUMBER	DESCRIPTION
2	1	3-205-1 REV C MNPV6 DISCO TOP	3-205-1 REV C MNPV6 DISCO TOP
3	1	5-029-1 badge2	5-029-1 badge2
5	1	5-048-1 REV C MNPV6 DISCO HANDLE	5-048-1 REV B MNPV6 DISCO HANDLE
8	1	3-225-1 REV C MNPV6 STOP	3-225-1 REV C MNPV6 STOP
10	1	5-053-1 REV B MNPV6 DISCO LABEL	5-053-1 REV A MNPV6 DISCO LABEL
11	1	5-057-1 REV B MNPV6 DISCO SEALING RING	5-057-1 REV B MNPV6 DISCO SEALING RING
12	1	3-224-1 REV B MNPV6 LOCK BASE	3-224-1 REV B MNPV6 LOCK BASE
13	2	9-281-1 O-RINGS EPDM AS568B-150	9-281-1 O-RINGS EPDM AS568B-150
14	2	6-091-1 SCREW 10-32 X .375 FHP SMS SS	6-091-1 SCREW 10-32 X .375 FHP SMS SS
15	1	6-007-1 SCREW SMS 10 X.375 PHP SS	6-007-1 SCREW SMS 10 X.375 PHP SS
16	1	5-050-2 REV B MNPV6 DISCO GRABBER	5-050-2 REV B MNPV6 DISCO GRABBER
17	3	6-065-1 SCREW 10-32 X .5 FHP SS	6-065-1 SCREW 10-32 X .5 FHP SS
18	1	6-017-1 INT. STAR WASHER 10	6-017-1 INT. STAR WASHER NO.10 SS
20	1	5-049-1 REV D MNPV6 DISCO ATTACHMENT PLATE	5-049-1 REV D MNPV6 DISCO ATTACHMENT PLATE
28	3	9-282-1 O-RINGS, EPDM AS568B-011	9-282-1 O-RINGS, EPDM AS568B-011
30	1	10-008-1 B DIAGRAM	10-008-1 B DIAGRAM
32	1	10-061-1 MNPVXX DISCO STOP ADHESIVE TAPE	10-061-1 MNPVXX DISCO STOP ADHESIVE TAPE

ALL TOLERANCES, UNLESS OTHERWISE STATED: x.xxx= +/-0.005" x.xx= +/-0.01" x.x= +/-0.05" ALL ANGLES = +/- 1° UNLESS OTHERWISE STATED		DRAWN Bob Q CHECKED QA MFG APPROVED	6/20/2011 TITLE <h1>MNPV6 DISCO</h1>
MATERIAL: FINISH: PROCESS:	STANDARDS:	SIZE B PROJECT: MNPV6 DISCO DWG NO MNPV6 E-FILE:MNPV6 DISCO FRONT COVER ASSY.iam	REV A SHEET 3 OF 3

