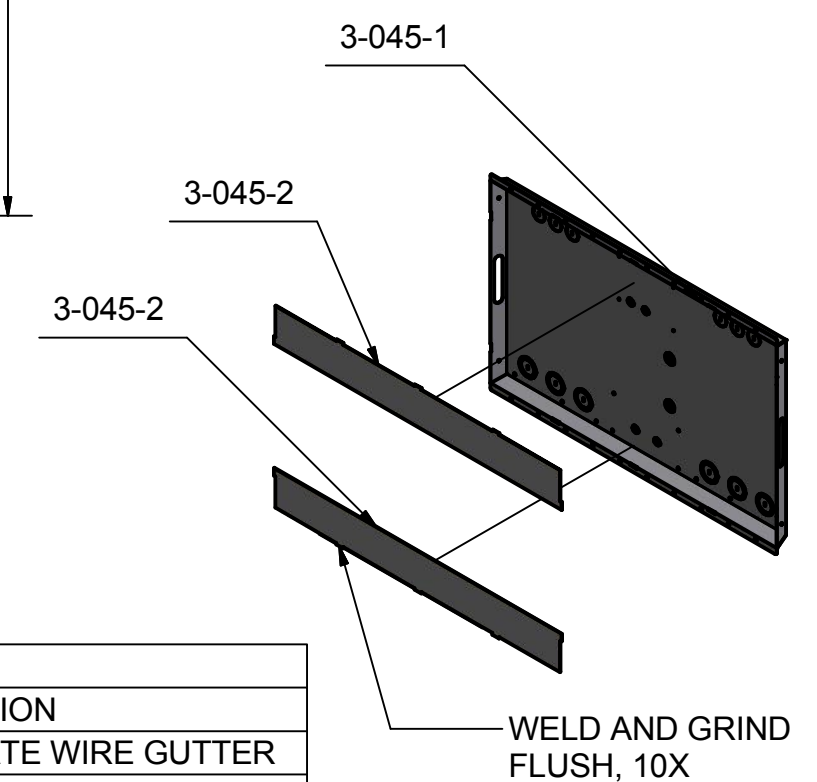


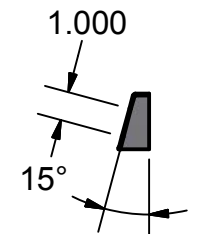
| REVISION HISTORY | | | |
|------------------|--|----------|-------|
| REV. | DESCRIPTION OF CHANGE | DATE | SIGN |
| A | DESIGN RELEASE | 7/27/06 | ROBIN |
| B | TURN HOLES INTO KNOCK OUTS FOR FLAT PATTERN. ACTUAL PART HAD HANDLE SLOTS ON SIDE | 5/28/13 | RAQ |
| C | INCREASE WIDTH BY .5" TO ALLOW TWO FROM 41.705" TO 42.205". MPPT CONTROLLERS TO FIT IN THE MIDDLE REMOVED UNUSED HOLES INCREASED KNOCK OUT SETS FROM 2 TO 3X. ADDED HOLES FOR MOUNTING MAGNUM ME-MTR AND OUTBACK HUB. ADDED 4 EACH .875" KNOCK OUTS FOR OUTBACK HUB AND ME-RTR | 5/28/13 | RAQ |
| D | SUPPLIER FOUND INTERFERENCE FIT DECREASED END FLANGE WIDTH BY .02" TO CORRECT ISSUE. | 5/28/13 | RAQ |
| E | PLATE FLEX'S DURING ASSEMBLY ADDED WELDING OF CORNERS AND REPLACED SCREW IN GUTTERS WITH WELDED GUTTERS. | 12/29/17 | RAQ |



SECTION A-A
SCALE .15

| PARTS LIST | | | |
|------------|-----|-------------|------------------------------------|
| ITEM | QTY | PART NUMBER | DESCRIPTION |
| 1 | 2 | 3-045-2 | DUAL MAGNUM BACK PLATE WIRE GUTTER |
| 2 | 1 | 3-045-1 | DUAL MAGNUM BACK PLATE |

- NOTES
- 1) MATERIAL: MILD STEEL, .059" THICK
 - 2) FINISH: POWDER COAT, CARDINAL GRAY, GR522
 - 3) PROCESS: SHEET METAL FABRIATION WELDING AND POWDER COAT.
 - 4) SOLID MODEL FILE: WAS baseplaterrevA.ipt IS AS STATED IN TITLE BLOCK



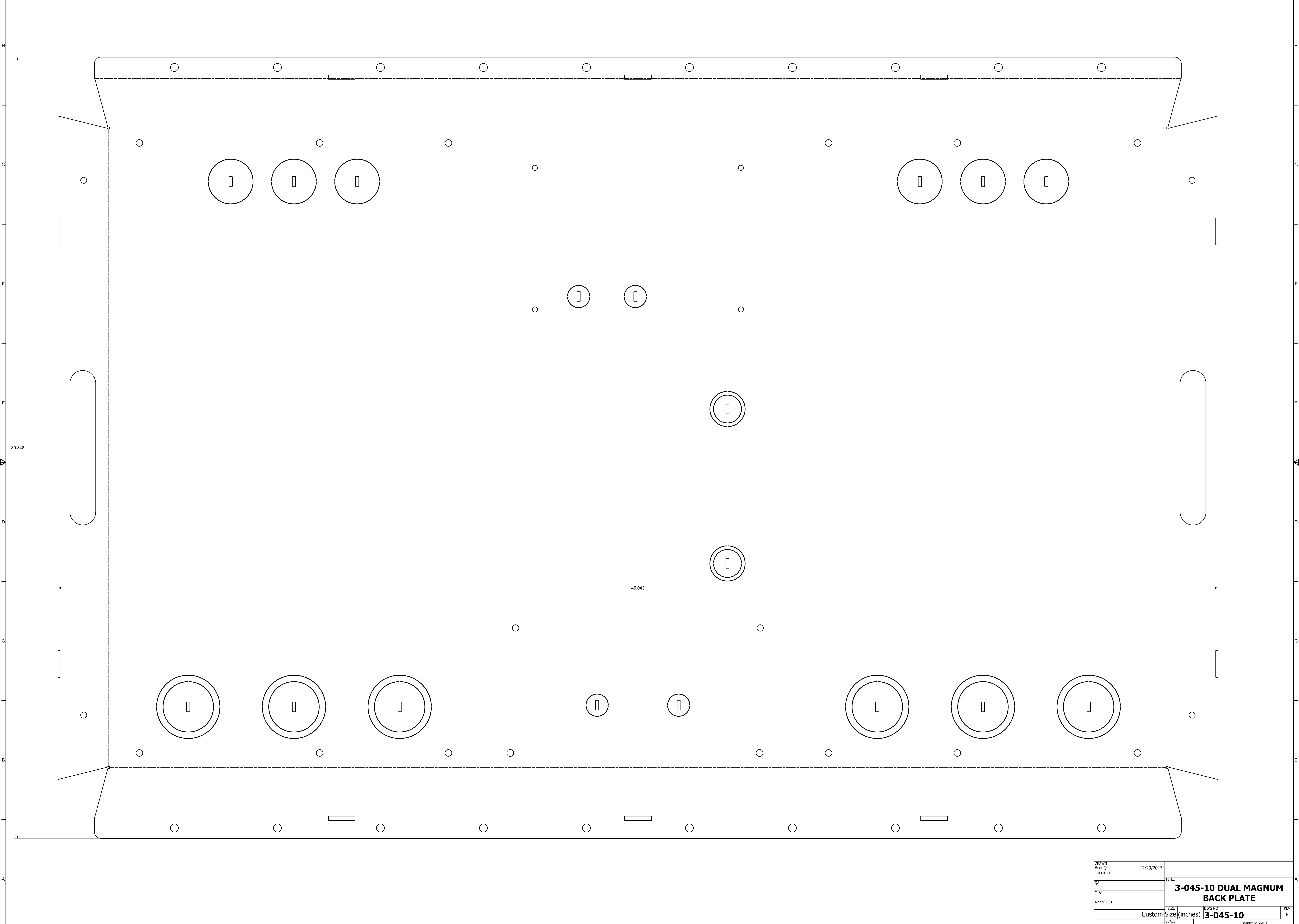
| | | | |
|---|------------|----------------|------------|
| ALL TOLERANCES, UNLESS OTHERWISE STATED: x.xxx=+/-0.005" x.xx=+/-0.01" x.x=+/-0.05" | | DRAWN Bob Q | 12/29/2017 |
| ALL ANGLES = +/- 1° UNLESS OTHERWISE STATED | | CHECKED | |
| MATERIAL: | STANDARDS: | QA | |
| FINISH: | | MFG | |
| PROCESS: | | APPROVED | |

MIDNITE SOLAR, INC

TITLE: **3-045-10 DUAL MAGNUM BACK PLATE**

| | | | |
|-----------|--------------------|--------------------|----------|
| SIZE B | PROJECT: MAGNUM | DWG NO 3-045-10 | REV E |
|-----------|--------------------|--------------------|----------|

E-FILE: 3-045-1 REV E DUAL MAGNUM BACK PLATE.ipt SHEET 1 OF 4



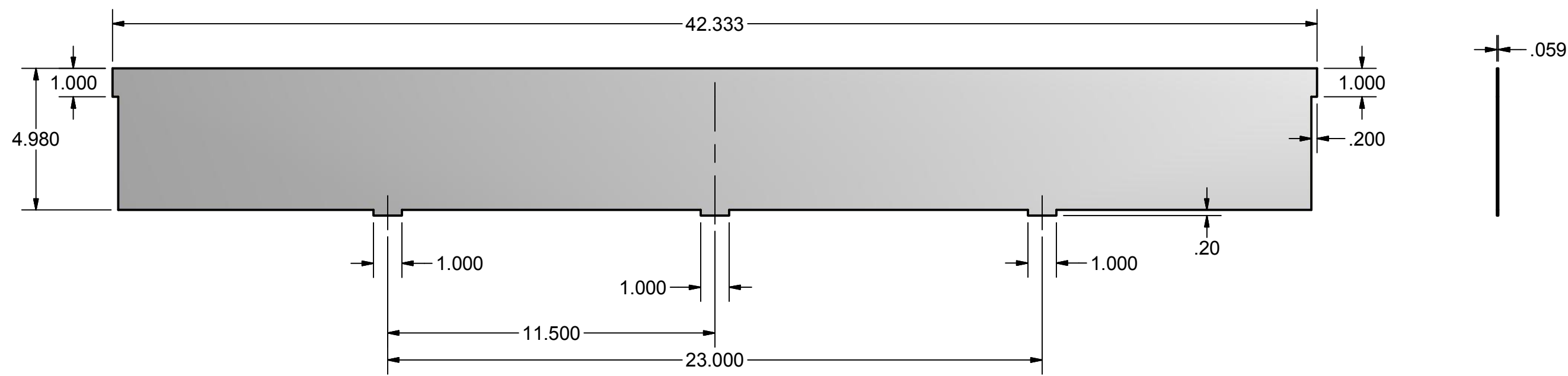
| | | |
|----------------|------------------------------|--|
| DRAWN Bob Q | 12/29/2017 | TITLE |
| CHECKED | | 3-045-10 DUAL MAGNUM BACK PLATE |
| QA | | |
| PIG | | |
| APPROVED | | |
| | SIZE Custom Size (inches) | DWG NO 3-045-10 |
| | SCALE | REV E |

FLAT PATTERN, 1:1

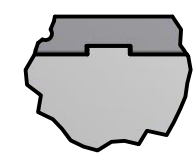
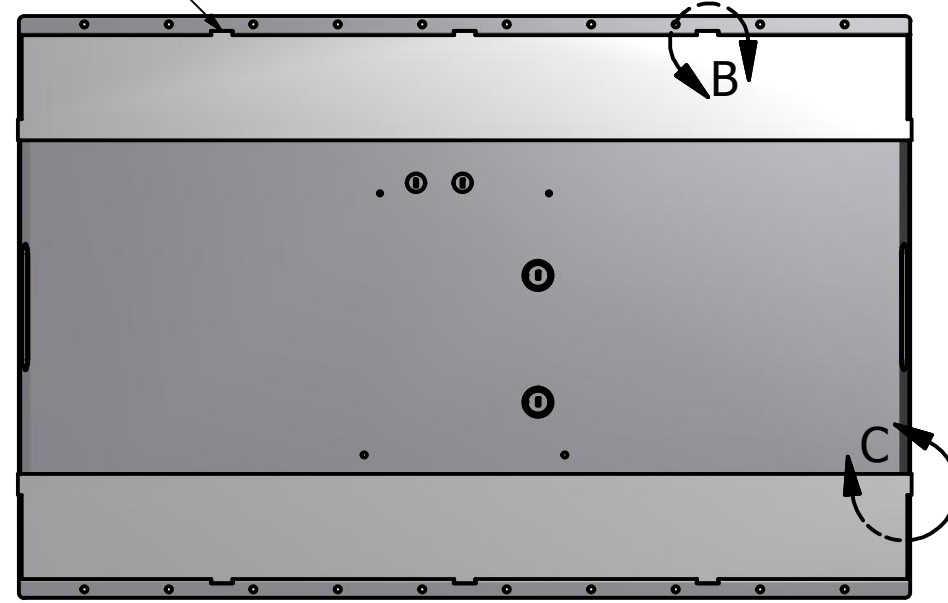


| | | | |
|----------------|------------|--|-----------------|
| DRAWN Bob Q | 12/29/2017 | | |
| CHECKED | | TITLE | |
| QA | | 3-045-10 DUAL MAGNUM BACK PLATE | |
| MFG | | | |
| APPROVED | | SIZE | DWG NO |
| | Custom | Size (inches) | 3-045-10 |
| | SCALE | | REV |
| | | | E |
| | | | SHEET 3 OF 4 |

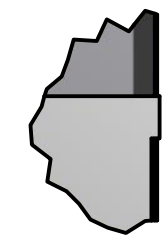
| REVISION HISTORY | | | |
|------------------|-----------------------|------|------|
| REV. | DESCRIPTION OF CHANGE | DATE | SIGN |



WELD AND GRIND FLUSH, 10X



DETAIL B
SCALE 0.22 : 1
6X



DETAIL C
SCALE 0.22 : 1
4X

| | | | |
|--|--|----------------|------------|
| ALL TOLERANCES, UNLESS OTHERWISE STATED: x.xxx= +/-0.005" x.xx= +/-0.01" x.x= +/-0.05" | | DRAWN Bob Q | 12/29/2017 |
| | | CHECKED | |
| | | QA | |
| | | MFG | |
| | | APPROVED | |
| | | | |
| | | | |
| | | | |

MIDNITE SOLAR, INC

**3-045-10 DUAL
MAGNUM BACK PLATE**

| | | | |
|-----------|--------------------|--------------------|----------|
| SIZE B | PROJECT: MAGNUM | DWG NO 3-045-10 | REV E |
|-----------|--------------------|--------------------|----------|