

Firmware install with Windows XP

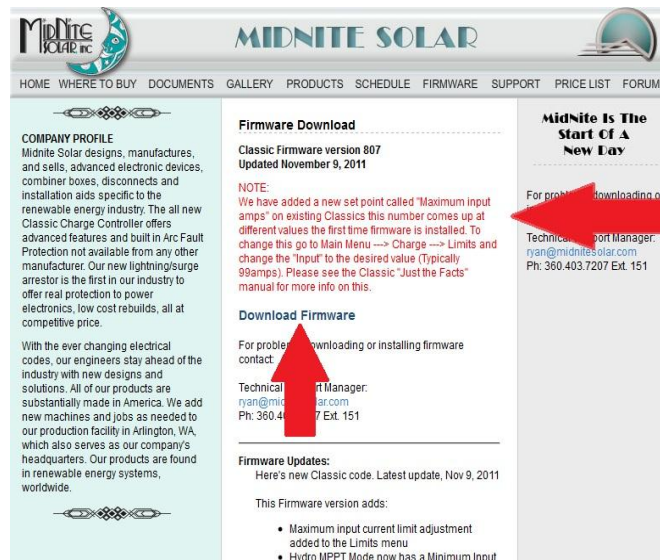
Step 1. Go to our website www.midnitesolar.com and Left Click on Firmware.



Step 2. Left Click on Download Firmware.



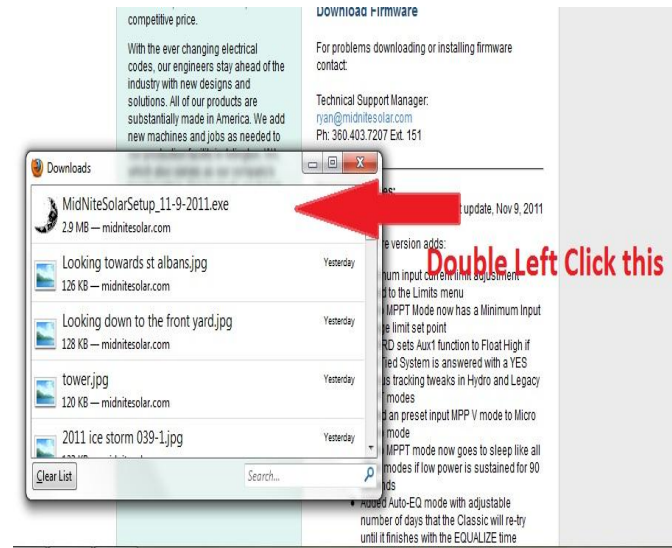
Step 3. Read the Notes in red first and then Left Click on Download Firmware.



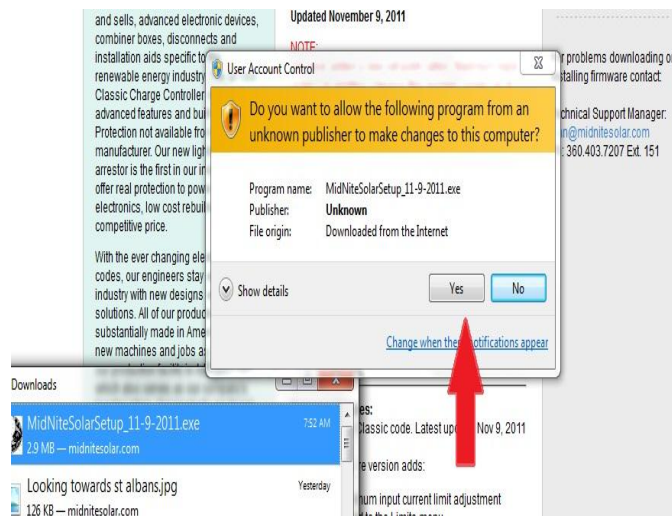
Step 4. Left Click on Save File. (Note these screen shots are done with Mozilla Firefox see alternate browsers.)



Step 5. After the Download, Windows should leave a box like this. If not go to your Documents and Downloads and you will find it there. Double Left Click on the MidNite Solar file.



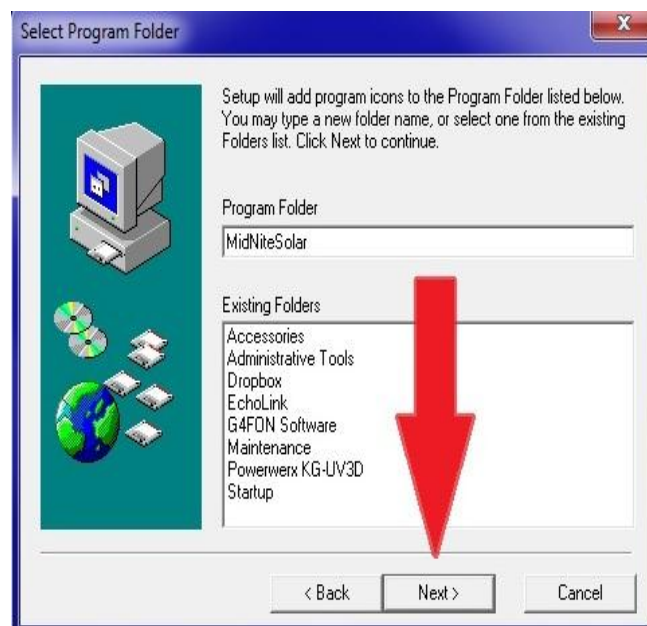
Step 6. You may be asked by windows if it is ok to download. You may also be asked by your antivirus if it is ok as well. Left Click Yes to continue.



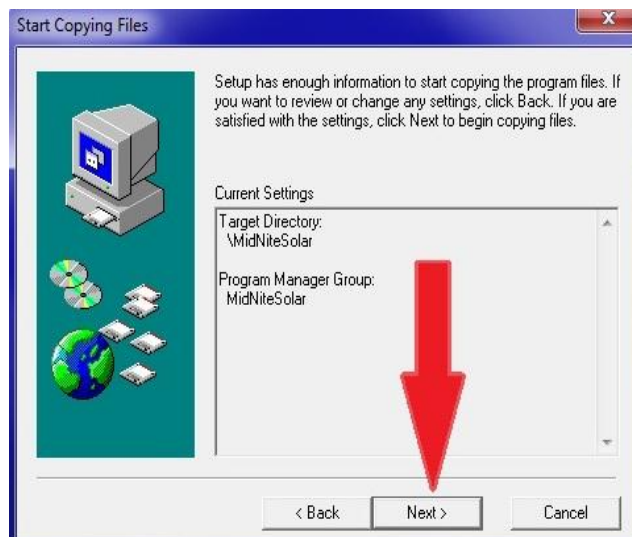
Step 7. After reading the License Agreement Left Click Yes.



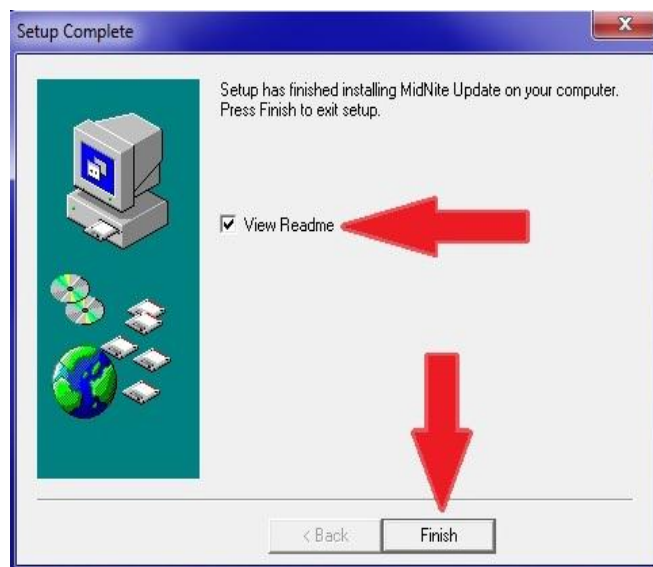
Step 8. Make sure the file is saving as shown below. Windows should select this for you. Left Click Next.



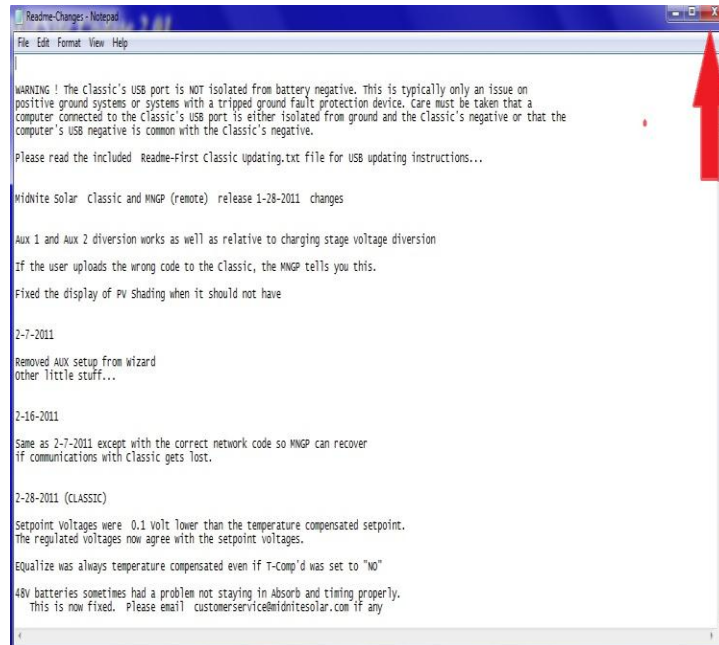
Step 9. Left Click Next



Step 10. View Read Me file should be checked and Left Click Finish



Step 11. The Read Me file will open and we encourage you to scroll down and see what changes have been made. After reading all the info simply Left Click the Red X.



Step 12. You will now need to have the USB cable that came with the Classic and we will assume it is already plugged into the USB jack in the Classic. The jack is inside the Classic case beside the Ethernet jack and the Temperature sensor plug. If you need help with this stage please consult the owner's manual.



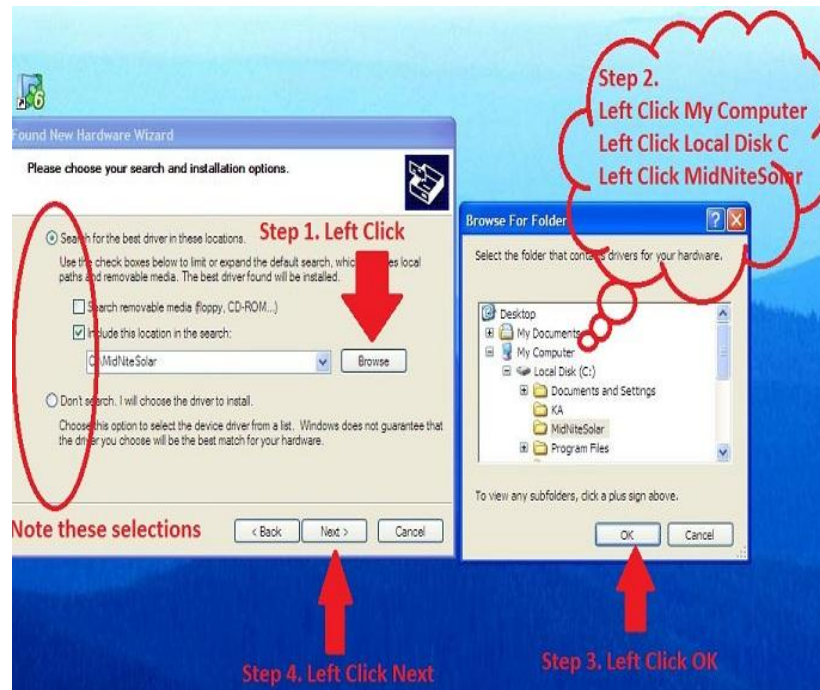
Step 13. With the power on to the Classic, plug the other end of the USB cable into the PC you are using to install firmware. The found new hardware wizard will open. Select the proper box as shown and Left Click Next.



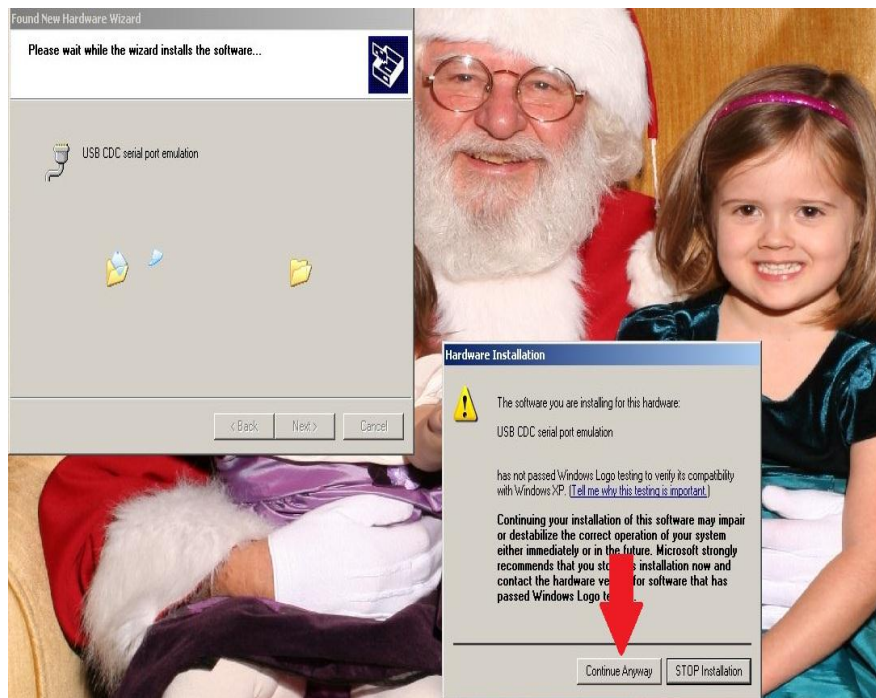
Step 14. Select the appropriate box as shown and Left Click Next.



Step 15. Select the appropriate selections as shown in the red oval. Now Left Click Browse as shown. In the “Browse for Folder” window Left Click “My Computer”, Left Click “Local Disk C” and Left Click “MidNiteSolar”. Now Left Click OK on this window and Left Click Next on the underlying window.



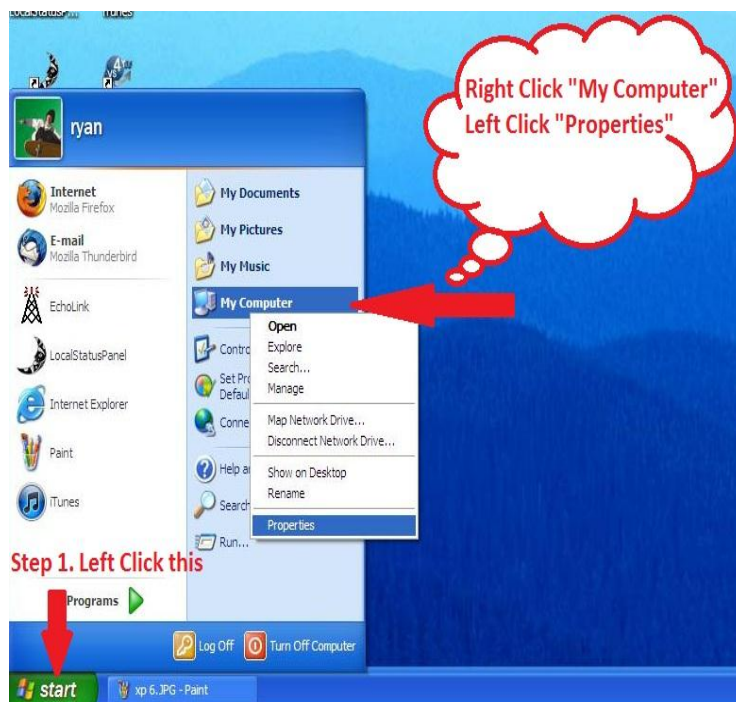
Step 16. Left Click on Continue Anyway.



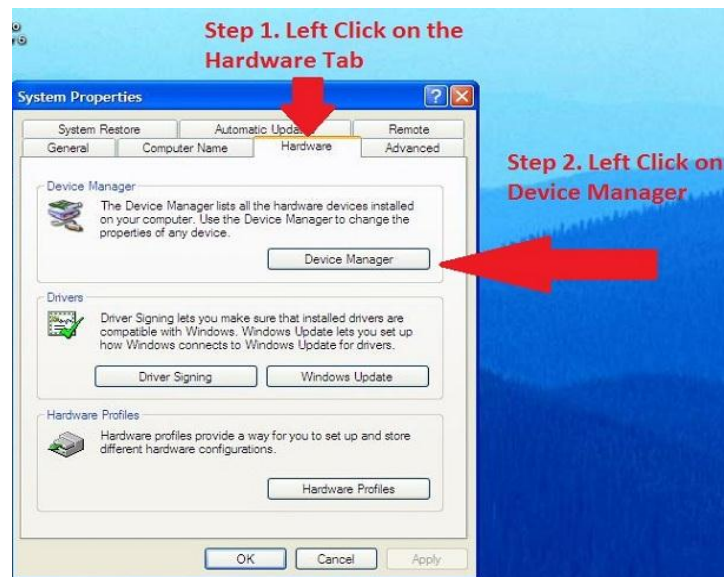
Step 17. Left Click Finish.



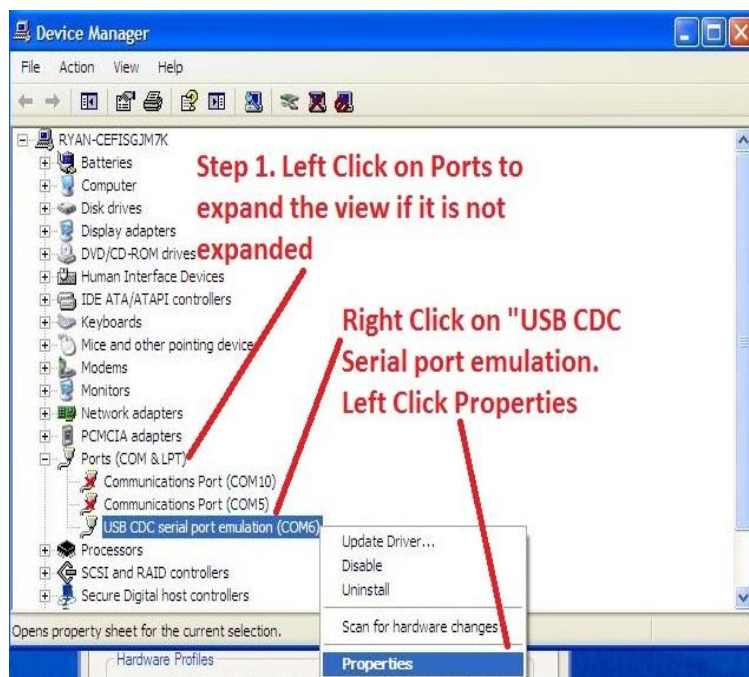
Step 18. Now we need to change the Com port to 8. Left Click on Start, Right Click on My Computer and Left Click on Properties. Note if "My Computer" is not here look for an icon on the desktop Right click on it.



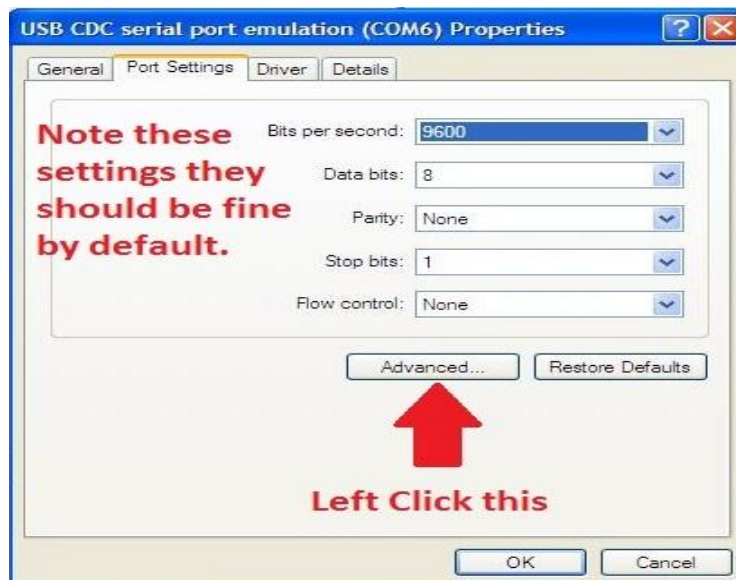
Step 19. Left Click on the Hardware tab and then Left Click on the Device Manager button.



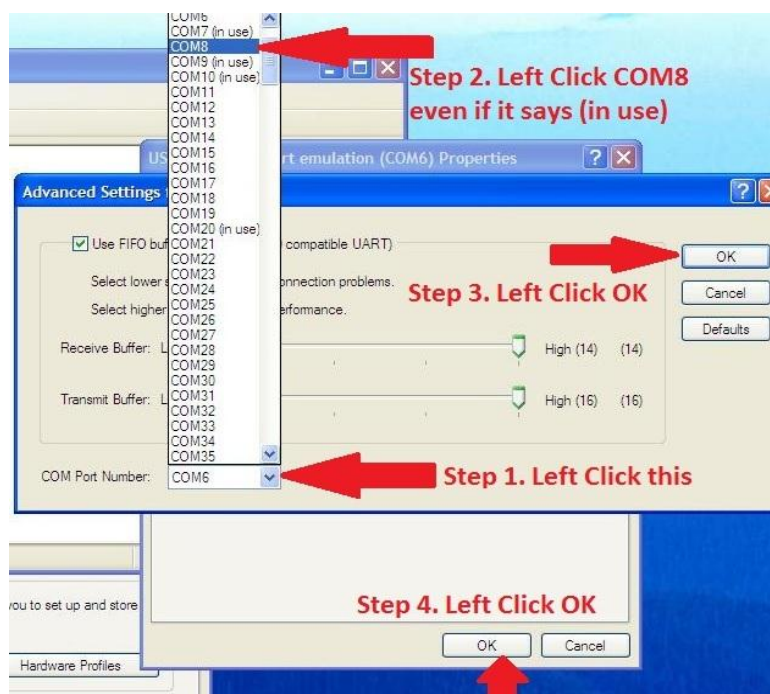
Step 20. Left Click on Ports as shown below if it is not expanded as shown. Right Click on USB CDC serial port emulation and Left Click on Properties.



Step 21. Left Click on the “Port Settings” tab. Check the settings shown here they should be fine by default. Left Click on Advanced as shown.



Step 22. Left Click the drop down arrow beside the Com port as shown. Find COM8 and Left Click on it even if it shows “In Use”. Left Click OK on this window and Left Click OK on the underlying window. This concludes setting the com port and you can now close all remaining windows and browsers.

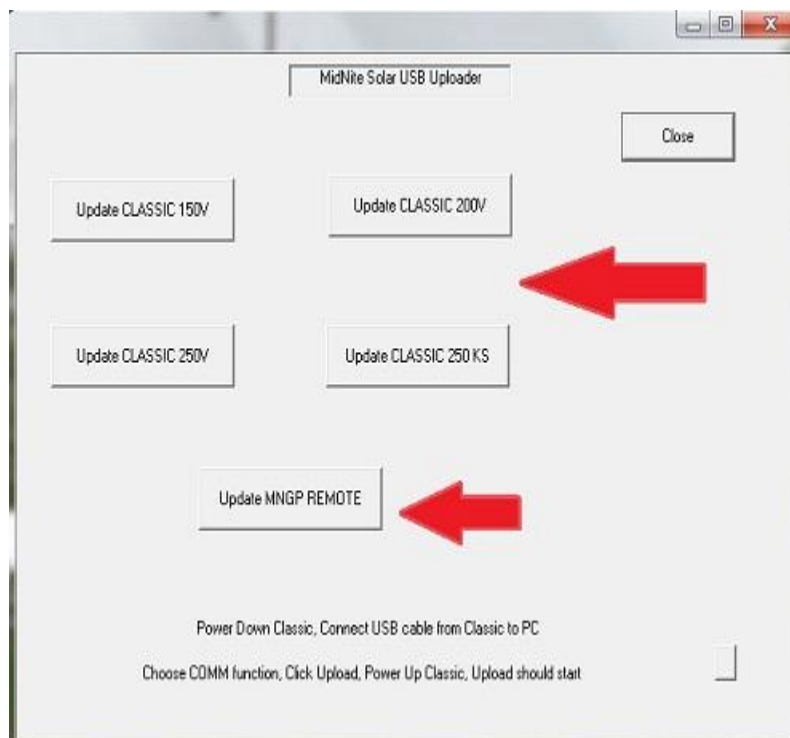


This concludes setting the PC up for the first time now we will go through the Firmware install.

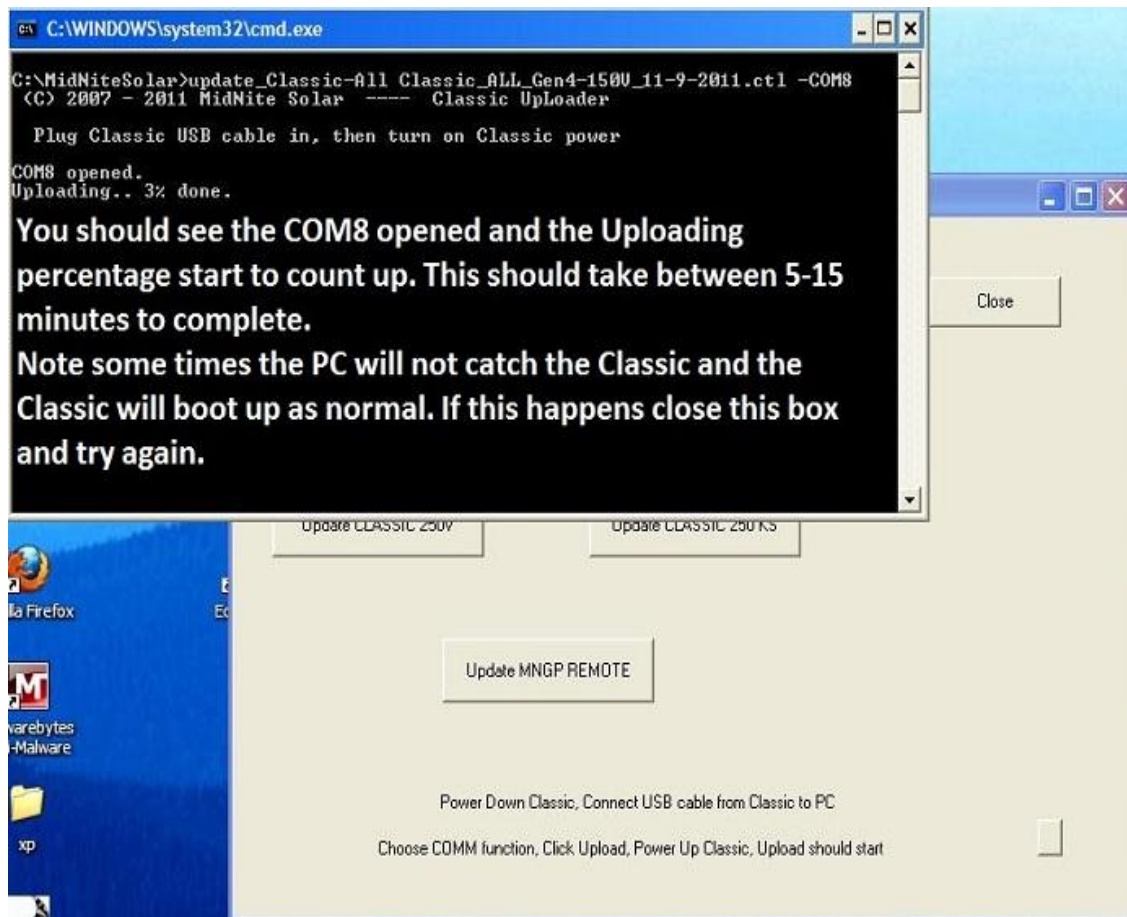
Step 23. Find the MidNite Icon and Double Left Click on it to open the program.



Step 24. With the Classic powered off and the USB cable plugged in you will need to select the Classic model you have. (150,200 etc)



Step 25. A Black box will pop up at this time turn the power on to the Classic. There should be a COM8 Opened and an Uploading Percentage starting to count up to 100%



This process should take between 5-15 minutes and the box will go away when it is complete.

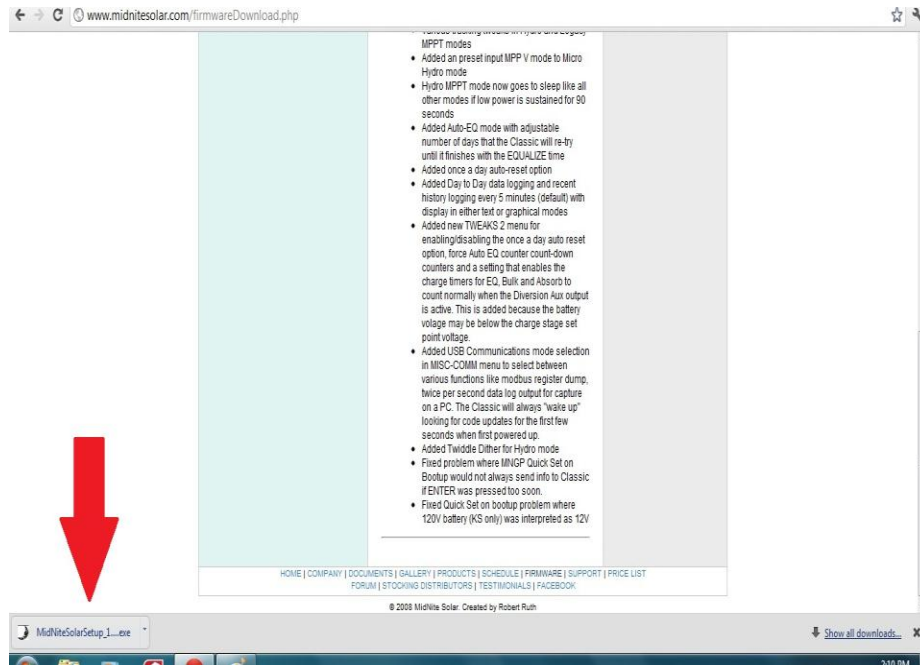
Step 26. At this point you need to power down the Classic and Left Click "Update MNGP Remote". When the Black box pops up turn the power on to the Classic and Com8 Open should show and it will start slowly counting to 100% this will take around 15 minutes.

After the box goes away, power off the Classic and power it back on and you should be all set. Please check all settings to ensure they did not change. None of your custom settings should change but we prefer to be safe here.

Alternate Browsers

Google Chrome

On Google Chrome when you click on download the file will show up in the bottom left of the browsers screen.

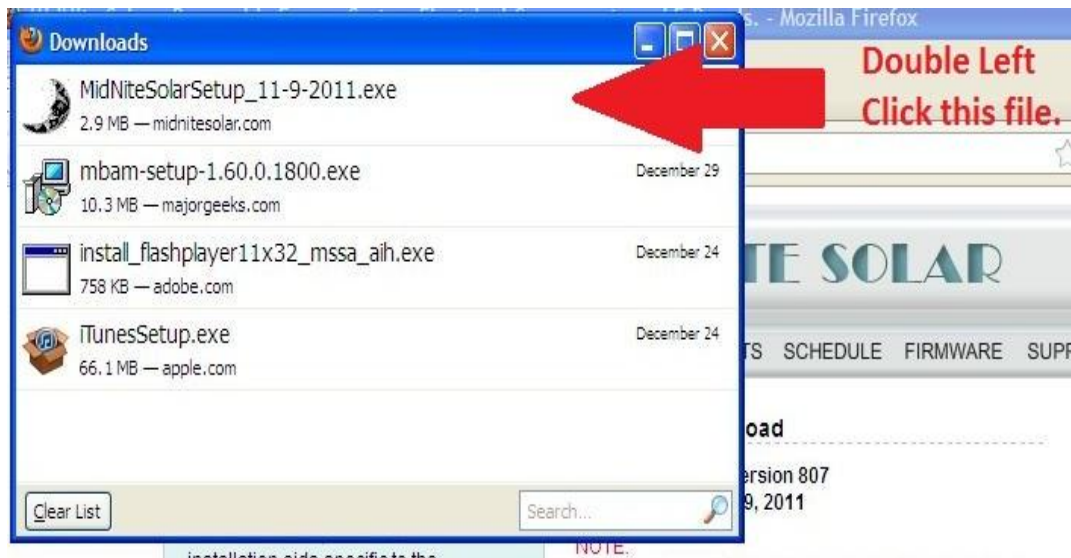


Internet Explorer

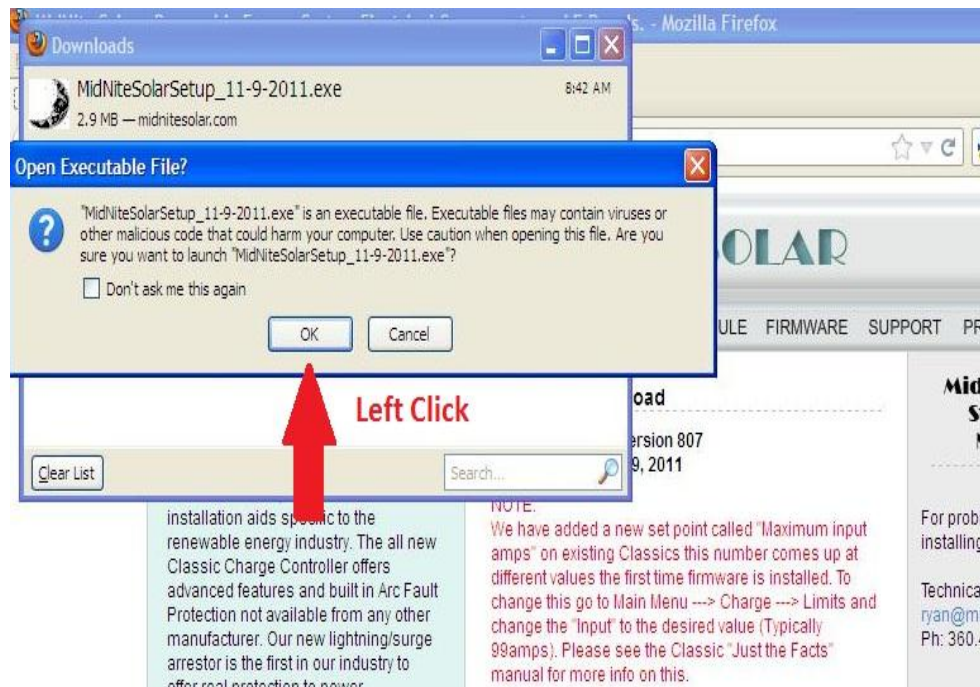
Left Click on Save File



Double Left Click on the MidNiteSolarSetup.exe file to run it.



Left Click OK on the security warning window.



Left Click on Run on the Security warning window.

