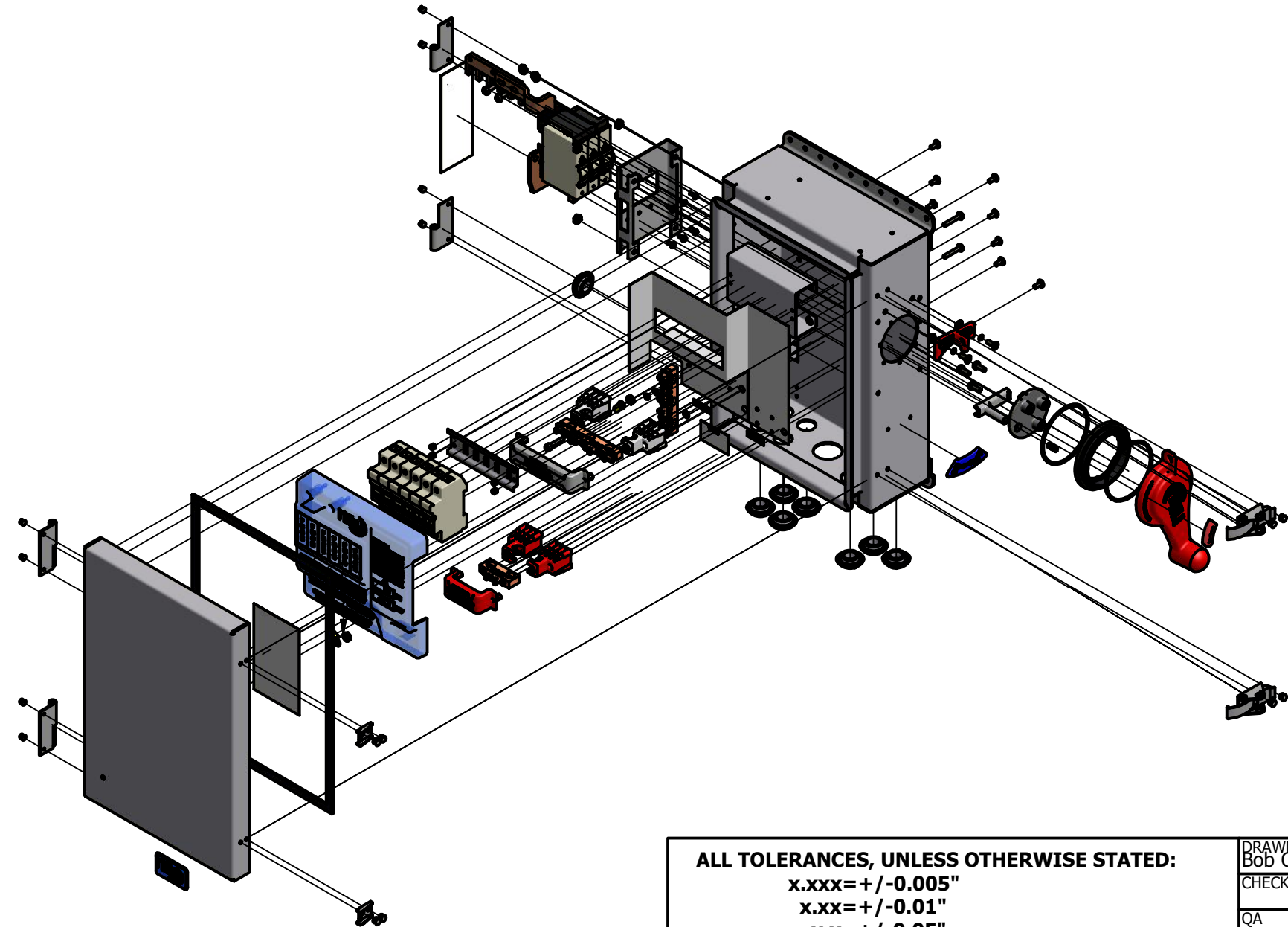


NOTES

- 1) ITEM 26 ,BUSBAR , MUST HAVE TWO END SCREWS REMOVED, SO THAT ITEM 3, WHITE INSULATORS, CAN BE INSTALLED.
- 2) UNIT SHIPS WITH THE FOLLWING
 - ° 6 EACH BLACK TWO WIRE STRAIN RELIEFS, P/N 9-328-1
 - ° 6 EACH BLACK STRAIN RELIEF NUTS, P/N 9-328-1
 - ° 6 EACH STRAIN RELIEF WASHERS, PN 9-328-1
 - ° UNIT SHIPS WITH AN ONE SPD 600V.
- 3) WIRES FROM LIGHTENING ARRESTOR ARE NOT SHOWN. THOSE WIRES ARE AS FOLLOWS:
 - ° GREEN WIRE FROM ARRESTOR GOES TO GROUND BUSBAR, 4TH POSITION.
 - ° BLACK WIRE FROM ARRESTOR GOES TO PV NEGATIVE, 3RD POSITION
 - ° RED WIRE FROM ARRESTOR GOES TO PV POSITIVE, 2ND POSITION.
 - ° GREEN WIRE PART NUMBER, 6 INCHES LONG GOES FROM GROUND BUSBAR TO STUD ON COVER. USE ITEM 26 TO TERMINATE AT STUD
- 3) 6 FUSES SHIP WITH THE UNIT, MN P/N 9-084-1



REVISION HISTORY			
REV.	DESCRIPTION OF CHANGE	DATE	SIGN
P1	PRODUCTION RELEASE	11/21/11	RAQ
A	SEPARATED OUT HAT FROM CHASSIS ADDED WATER SEALING SCREWS	12/27/11	RAQ

PARTS LIST			
ITEM	QTY	PART NUMBER	DESCRIPTION
1	1	5-120-1 P1 MNPV6HV DISCO 4X DEAD FRONT	5-120-1 P1 MNPV6HV DISCO 4X DEAD FRONT
2	1	5-029-1 REV A BADEGE 2	5-029-1 REV A BADEGE 2
3	2	5-047-2 REV A MN INSULATOR WHITE 2-0	5-047-2 REV A MN INSULATOR WHITE 2-0
4	2	5-047-3 REV A MN INSULATOR RED 2-0	5-047-3 REV A MN INSULATOR RED 2-0
6	8	6-016-1 KEPS NUT 10-32 SS	6-016-1 KEPS NUT 10-32 SS
8	2	6-095-1 SOUTHCO 97-37-24 KEEPER	6-095-1 SOUTHCO 97-37-24 KEEPER
9	1	9-225-1 5 BUSBAR POSITION 2-0	9-225-1 5 BUSBAR POSITION 2-0
10	2	9-291-9 P1 MNXX BUSBAR 9 POSITION 2-0	9-291-9 P1 MNXX BUSBAR 9 POSITION 2-0
12	2	9-309-1 SOUTHCO 96-04-SIWL WITH PIN	9-309-1 SOUTHCO 96-04-SIWL WITH PIN
13	1	3-304-10 REV B MNPV6 DISCO 4X DOOR	3-304-10 REV B MNPV6 DISCO 4X DOOR
14	1	5-114-3 REV B MNXX BUSBAR GUARD 2-0 6 POSITION	5-114-3 REV B MNXX BUSBAR GUARD 2-0 6 POSITION
15	1	5-122-2 REV B MNXX WHITE BUSBAR GUARD 2-0-9	5-122-2 REV B MNXX WHITE BUSBAR GUARD 2-0-9
16	1	3-307-1 REV B MNPV6 DISCO 4X BUSBAR	3-307-1 REV B MNPV6 DISCO 4X BUSBAR
17	1	3-308-1 REV B MNPV6 DISCO 4X BUSBAR	3-308-1 REV B MNPV6 DISCO 4X BUSBAR
18	1	3-309-1 REV B MNPV6HV DISCO 4X BUSBAR OUT	3-309-1 REV B MNPV6HV DISCO 4X BUSBAR OUT
19	6	9-083-1 FUSE HOLDER	9-083-1 FUSE HOLDER
20	1	5-130-1 REV B MNPV6 DISCO 4X INSULATOR	5-130-1 REV B MNPV6 DISCO 4X INSULATOR
22	2	6-112-1 SCREW 8-32 X 1.0 PHP SS	6-112-1 SCREW 8-32 X 1.0 PHP SS
23	2	6-113-1 8-32 NUT SS	6-113-1 SMALL PATTERN 8-32 NUT SS
24	7	6-343-1 AB4-2A SOLID RIVET 1-8	6-343-1 AB4-2A SOLID RIVET 1-8
25	5	6-045-1 SCREW 10-32 X .50 PHP SS	6-045-1 SCREW 10-32 X .50 PHP SS
26	2	9-377-1 MOLEX 12-10 AWG, NO.10	9-377-1 MOLEX 12-10 AWG, NO.10
27	1	6-034-1 SCREW SOC HD 10-32 X 7-8 SS	6-034-1 SCREW SOC HD 10-32 X 7-8 SS
28	2	6-116-1 NO.8 INTERNAL LOCK WASHWER	6-116-1 NO.8 INTERNAL LOCK WASHWER
29	8	9-342-1 HANSON AD54AH SEALED RIVET 5-32	9-342-1 HANSON AD54AH SEALED RIVET 5-32
32	2	6-096-1 SOUTHCO 97-50-310-12 ASSY	6-096-1 SOUTHCO 97-50-310-12 ASSY
33	2	9-309-1 SOUTHCO 96-04-SIWL NO PIN	9-309-1 SOUTHCO 96-04-SIWL NO PIN
35	1	3-253-1 REV C MNPV4HV DISCO 3R BREAKER BRACKET	3-253-1 REV C MNPV4HV DISCO 3R BREAKER BRACKET
36	1	3-310-1 REV B MNPV6 DISCO 4X DINRAIL	3-310-1 REV B MNPV6 DISCO 4X DINRAIL
38	1	9-326-1 CARLING CX-3 ASSY	9-326-1 CARLING CX-3 ASSY
39	6	6-060-1 SCREW 6-32 X5 .16 MS PHP	6-060-1 SCREW 6-32 X5 .16 MS PHP
40	1	5-049-1 REV D MNPV6 DISCO ATTACHMENT PLATE	5-049-1 REV D MNPV6 DISCO ATTACHMENT PLATE
42	1	5-048-1 REV C MNPV6 DISCO HANDLE	5-048-1 REV B MNPV6 DISCO HANDLE
43	2	9-281-1 O-RINGS EPDM AS568B-150	9-281-1 O-RINGS EPDM AS568B-150
44	2	9-282-1 O-RINGS, EPDM AS568B-011	9-282-1 O-RINGS, EPDM AS568B-011
45	1	5-057-1 REV D MNPV6 DISCO SEALING RING	5-057-1 REV D MNPV6 DISCO SEALING RING
46	1	3-224-1 REV C MNPV6 LOCK BASE	3-224-1 REV C MNPV6 LOCK BASE
48	2	6-091-1 SCREW 10-32 X .375 FHP SMS SS	6-091-1 SCREW 10-32 X .375 FHP SMS SS
49	1	5-098-1 P1 MNPV4-6HV DISCO GRABBER	5-098-1 P1 MNPV4HV DISCO GRABBER
50	1	5-053-1 REV B MNPV6 DISCO LABEL	5-053-1 REV A MNPV6 DISCO LABEL
51	4	6-049-1 .125 IN. DIA. BY .25 IN. LONG AL. RIVET	6-049-1 .125 IN. DIA. BY .25 IN. LONG AL. RIVET
53	1	3-225-1 REV C MNPV6 STOP	3-225-1 REV C MNPV6 STOP
54	1	9-334-1 MNPV6HV FOAM TAPE	9-334-1 MNPV6HV FOAM TAPE
55	1	10-066-1 B DIAGRAM	10-066-1 B DIAGRAM
56	1	10-066-1-A CAUTION LABEL	10-066-1-A CAUTION LABEL
57	1	10-066-1-C TORQUE	10-066-1-C TORQUE
58	1	10-066-1-D PV POSITIVE	10-066-1-D PV POSITIVE
59	1	10-008-1-E PV NEGATIVE	10-008-1-E PV NEGATIVE
60	1	10-066-1-H GND	10-066-1-H GND
61	1	9-378-1 CENTURY SPRING	9-378-1 CENTURY SPRING
63	8	5-107-1 REV A HALF INCH HOLE PLUG	5-107-1 REV A HALF INCH HOLE PLUG
65	1	3-305-10 REV D MNPV6 DISCO NEMA 4X CHASSIS	3-305-10 REV D MNPV6 DISCO NEMA 4X CHASSIS
66	1	3-311-10 REV C MNPV6HV DISCO 4X DIN RAIL HAT	3-311-10 REV C MNPV6HV DISCO 4X
67	8	6-144-1 SEELSCREW 10-32 X.375 PHPSS	6-144-1 SEELSCREW 10-32 X.375 PHPSS
68	2	9-426-1 ORING SILICONE .183 X .261 X .039 IN	9-426-1 ORING SILICONE .183 X .261 X .039 IN
69	1	9-343-1 AB4-2A SOLID RIVET 1-8	9-343-1 AB4-2A SOLID RIVET 1-8

ALL TOLERANCES, UNLESS OTHERWISE STATED: x.xxx= +/-0.005" x.xx= +/-0.01" x.x= +/-0.05" ALL ANGLES = +/- 1° UNLESS OTHERWISE STATED	
MATERIAL:	STANDARDS:
FINISH:	
PROCESS:	

DRAWN Bob Q	12/27/2011
CHECKED	
QA	
MFG	
APPROVED	

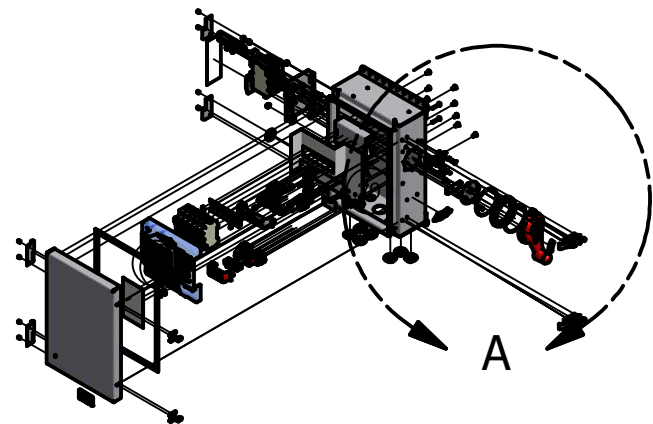
MIDNITE SOLAR, INC

MNPV6 REV A DISCO 4X FINAL ASSY

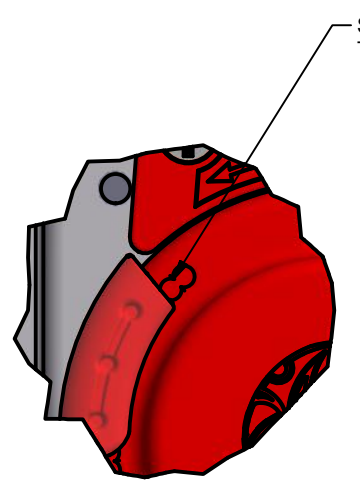
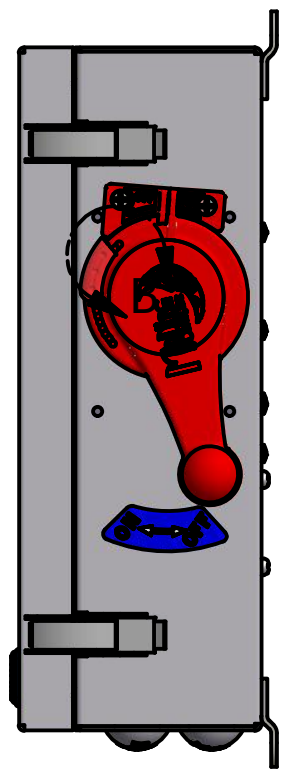
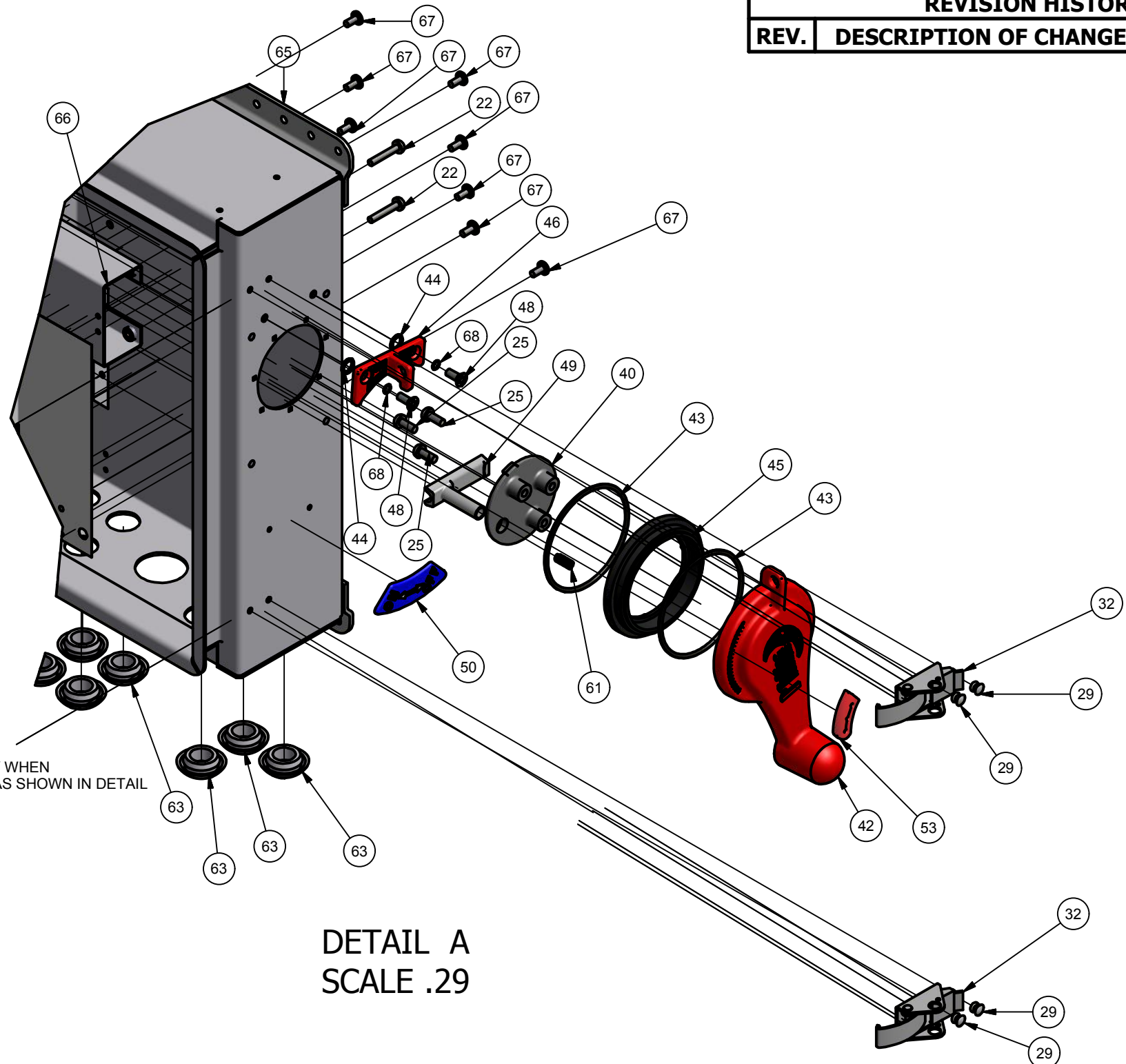
SIZE B	PROJECT: MNPV6HV 4X	DWG NO MNPV6 REV A DISCO 4X FINAL ASSY	REV A
-----------	------------------------	---	----------

E-FILE:MNPV6HV REV A DISCO 4X FINAL ASSY.iam SHEET 1 OF 5

REVISION HISTORY			
REV.	DESCRIPTION OF CHANGE	DATE	SIGN



- ASSEMBLY INSTRUCTIONS:**
- 1) LIBERALLY APPLY DOW CORNING 111 GREASE TO ITEMS 43 AND 44.
 - 2) APPLY LOCTITE 242 TO THREADS OF ITEM 25 BEFORE INSTALLATION
 - 3) TIGHTEN ITEM 25 UNTIL THE SCREWS BOTTOM OUT, THEN BACK OUT 1/2 TURN. VERIFY THAT THE HANDLE TURNS WITH A SLIGHT RESISTANCE BEFORE MOVING FORWARD WITH THE ASSEMBLY.
 - 4) APPLY LOCTITE SUPER GLUE 401 TO ITEM 53.
 - 5) SEE DETAILED VIEW "B" FOR POSITION OF ITEM 14 IN RELATION TO HOLES IN ITEM 9.
 - 6) APPLY CLEAR SILICONE SEALER (GENERAL ELECTRIC GEO12A) TO THREADS OF ITEM 48 BEFORE AND AFTER INSTALLATION.



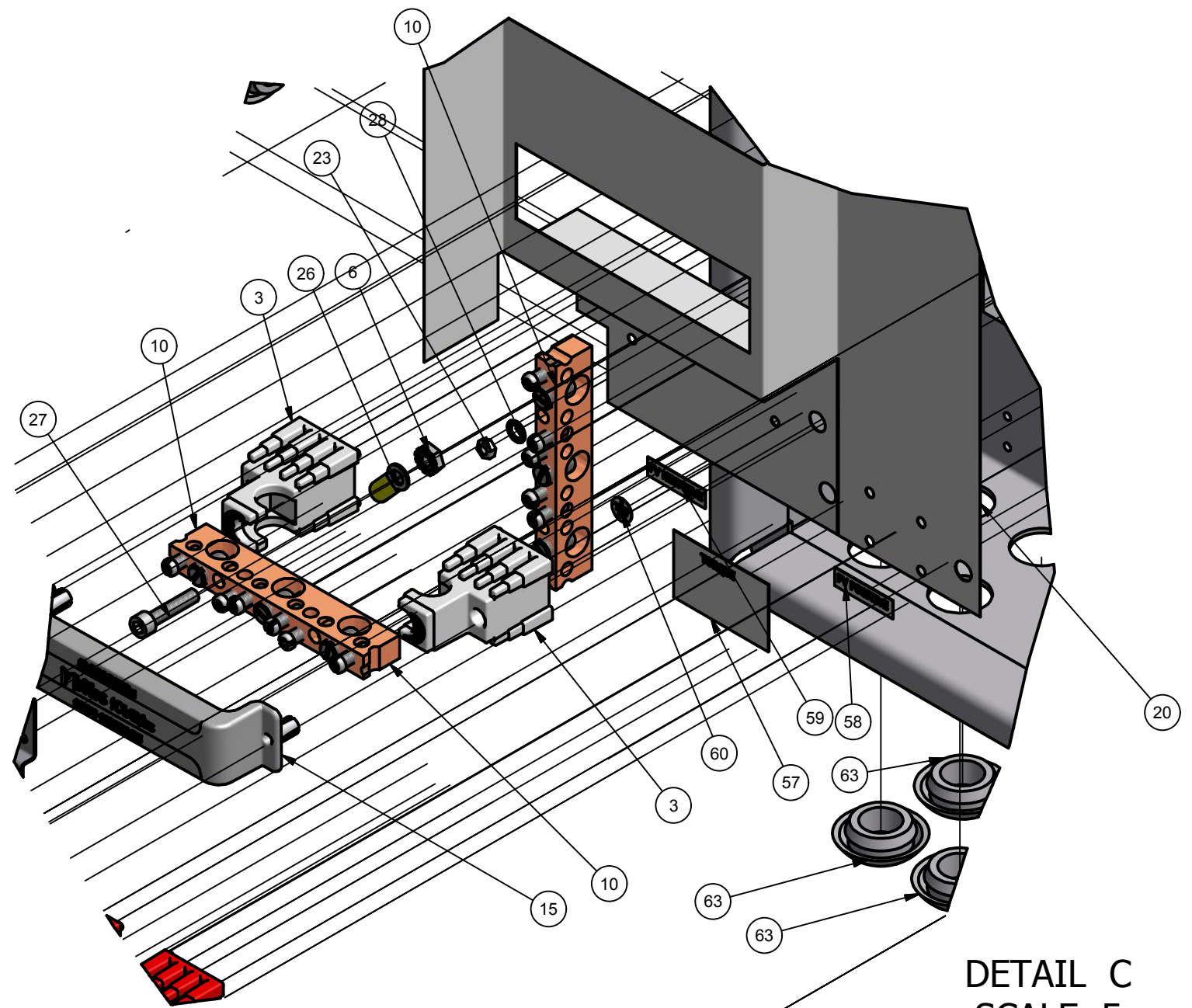
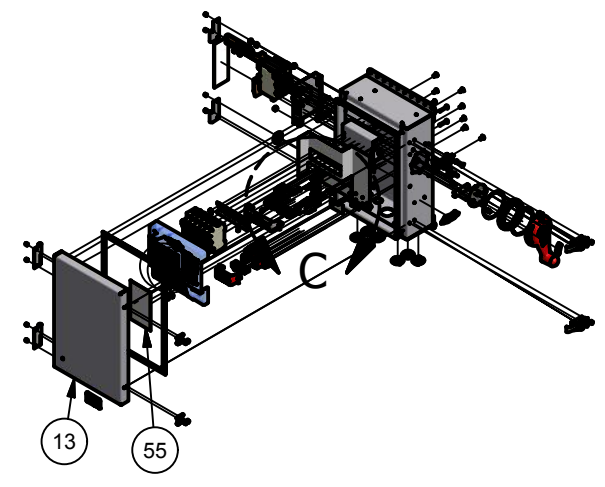
STOP IS POSITIONED CORRECTLY WHEN THE TWO HOLES ARE EXPOSED, AS SHOWN IN DETAIL

DETAIL B
SCALE .8

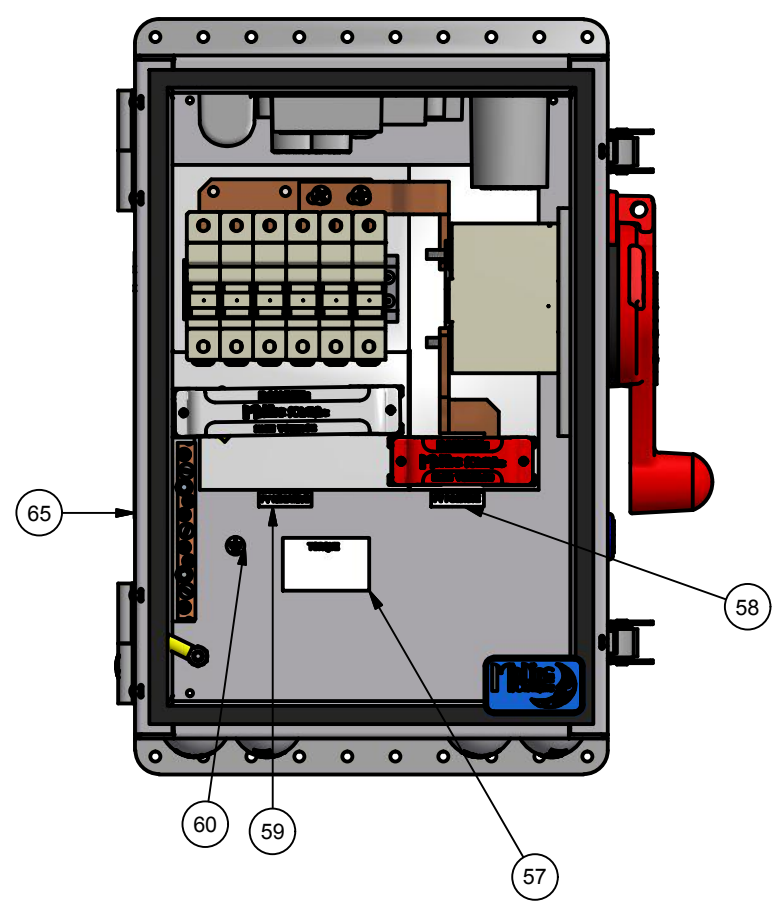
DETAIL A
SCALE .29

ALL TOLERANCES, UNLESS OTHERWISE STATED: x.xxx=+/-0.005" x.xx=+/-0.01" x.x=+/-0.05" ALL ANGLES =+/- 1° UNLESS OTHERWISE STATED		DRAWN Bob Q 12/27/2011	
MATERIAL: STANDARDS:		CHECKED	
FINISH:		QA	MNPV6 REV A DISCO 4X FINAL ASSY
PROCESS:		MFG	
		APPROVED	TITLE
			SIZE PROJECT: DWG NO REV B MNPV6HV 4X MNPV6 REV A DISCO 4X FINAL ASSY A
			E-FILE:MNPV6HV REV A DISCO 4X FINAL ASSY.iam SHEET 2 OF 5

REVISION HISTORY			
REV.	DESCRIPTION OF CHANGE	DATE	SIGN



DETAIL C
SCALE .5



NOTE:
1) ITEM 55 IS NOT SHOWN, IT IS ATTACHED TO THE INSIDE OF THE COVER ITEM 13 WHICH IS ALSO NOT SHOWN, IN THIS VIEW.

ALL TOLERANCES, UNLESS OTHERWISE STATED: x.xxx=+/-0.005" x.xx=+/-0.01" x.x=+/-0.05"		DRAWN Bob Q	12/27/2011
ALL ANGLES = +/- 1° UNLESS OTHERWISE STATED		CHECKED	
MATERIAL:	STANDARDS:	QA	
FINISH:		MFG	
PROCESS:		APPROVED	

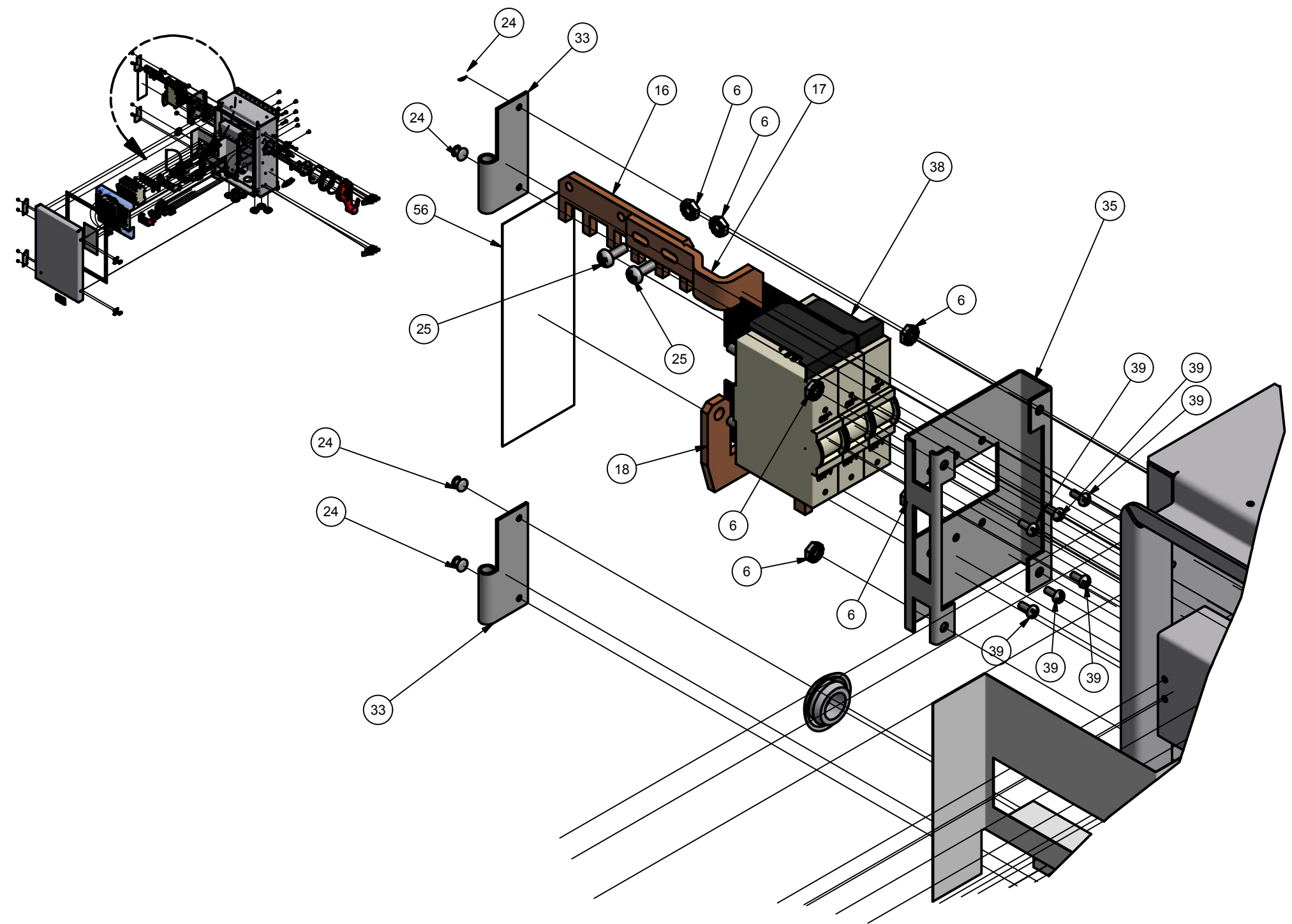
MIDNITE SOLAR, INC 

TITLE: MNPV6 REV A DISCO 4X FINAL ASSY

SIZE B	PROJECT: MNPV6HV 4X	DWG NO MNPV6 REV A DISCO 4X FINAL ASSY	REV A
-----------	------------------------	---	----------

E-FILE:MNPV6HV REV A DISCO 4X FINAL ASSY.iam SHEET 4 OF 5

REVISION HISTORY			
REV.	DESCRIPTION OF CHANGE	DATE	SIGN



DETAIL D
SCALE .4

ASSEMBLY INSTRUCTIONS:
 1) BUSBARS ARE HELD IN PLACE BY THE NUTS AND WASHERS THAT COME WITH THE BREAKERS.
 2) USE SQUEEZER TO COMPRESS RIVETS FARTHER THAN WITH POP RIVET GUN.

ALL TOLERANCES, UNLESS OTHERWISE STATED: x.xxx= +/-0.005" x.xx= +/-0.01" x.x= +/-0.05" ALL ANGLES = +/- 1° UNLESS OTHERWISE STATED		DRAWN Bob Q 12/27/2011		
MATERIAL: STANDARDS:		CHECKED		
FINISH:		QA	MNPV6 REV A DISCO 4X FINAL ASSY	
PROCESS:		MFG		
APPROVED		APPROVED		
SIZE B		PROJECT: MNPV6HV 4X	DWG NO MNPV6 REV A DISCO 4X FINAL ASSY	REV A
E-FILE:MNPV6HV REV A DISCO 4X FINAL ASSY.iam			SHEET 5 OF 5	