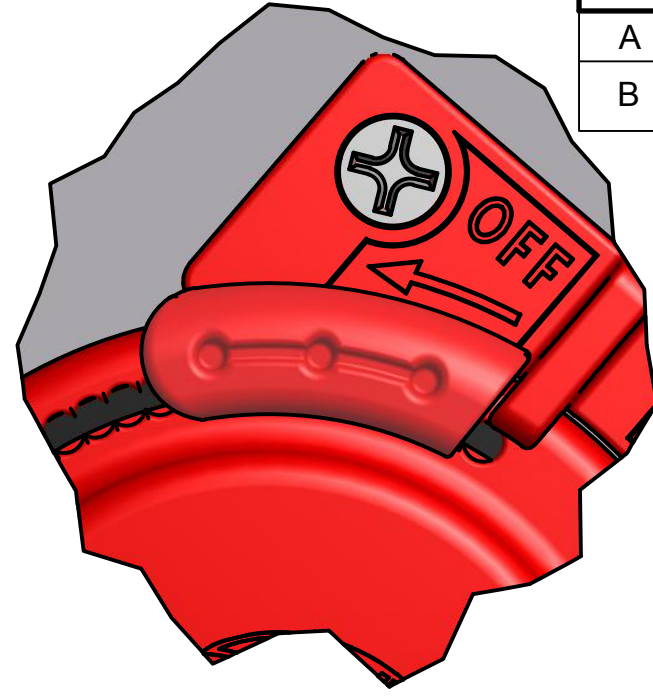


REVISION HISTORY			
REV.	DESCRIPTION OF CHANGE	DATE	SIGN
A	RELEASED FOR PRODUCTION	1/28/11	RAQ
B	ADDED T-SLIDER FOR ALIGNED CLOSURE	3/28/13	RAQ

NOTE THAT THE POSITION OF STOP IS LOCATED USING THE SINGLE HOLE AS A PLACEMENT GUIDE.

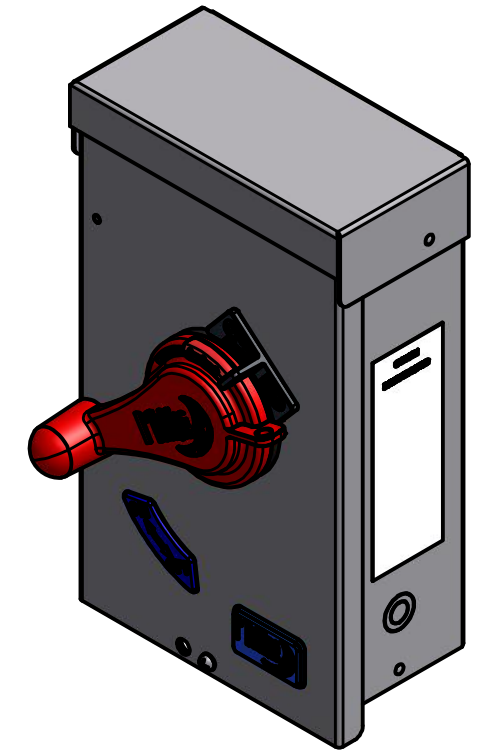
NOTE THAT THE HANDLE IS BELOW THE LOCK BASE

SEE SHEET 3 FOR P/N OF SCREW AND WASHER

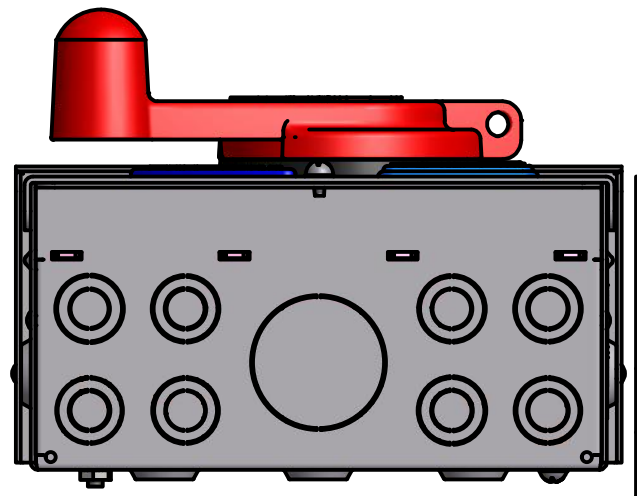


NOTES:
 1) THIS ASSEMBLY IS BROKEN DOWN INTO TWO ASSEMBLIES:
 PAGE 2 IS THE FRONT COVER ASSEMBLY AND ASSEMBLY NOTES
 PAGE 3 IS THE CHASSIS ASSEMBLY AND ASSEMBLY NOTES
 2) UNIT SHIPS WITH 6 STRAIN RELIEFS, 9-328-1 AND WASHERS, 9-139-1
 NO ADAPTORS OR SPD'S SHIP WITH THE UNIT

DETAIL G
 SCALE 1.5



PARTS LIST			
ITEM	QTY	PART NUMBER	DESCRIPTION
29	1	MNPV6 DISCO FRONT COVER ASSY	MNPV6 DISCO FRONT COVER ASSY
30	1	MNPV6 DISCO CHASSIS ASSY	MNPV6 DISCO CHASSIS ASSY



ALL TOLERANCES, UNLESS OTHERWISE STATED: $x.xxx = +/- 0.005"$ $x.xx = +/- 0.01"$ $x.x = +/- 0.05"$ ALL ANGLES = +/- 1° UNLESS OTHERWISE STATED		DRAWN Bob Q	3/28/2013
MATERIAL:		CHECKED	
FINISH:		QA	
PROCESS:		MFG	
STANDARDS:		APPROVED	

MIDNITE SOLAR, INC

TITLE
MNPV6 REV B DISCO 3R

SIZE B	PROJECT: MNPV6 DISCO 3R	DWG NO MNPV6 REV B DISCO 3R	REV B
-----------	----------------------------	--------------------------------	----------

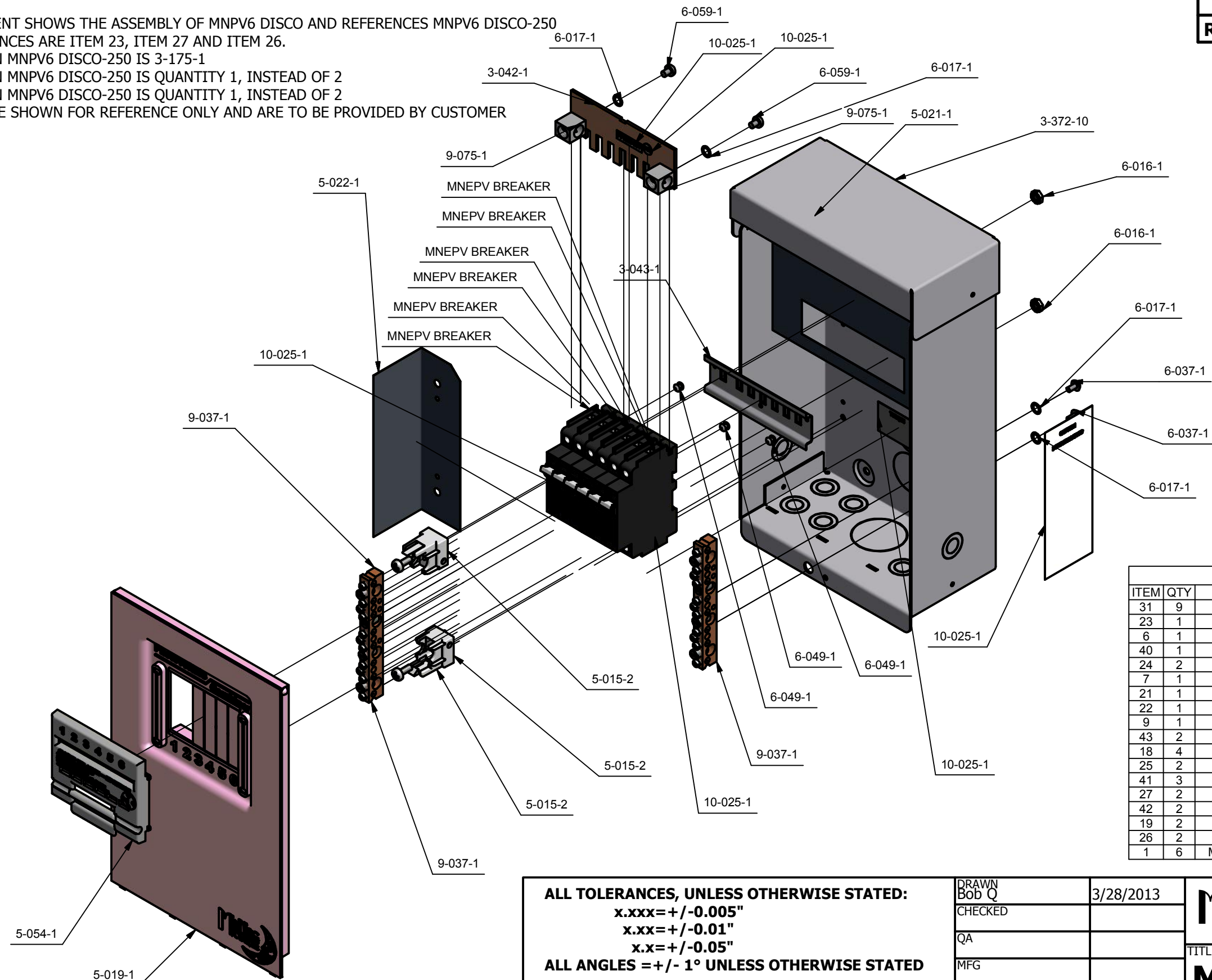
E-FILE: MNPV6 REV B DISCO 3R.iam

SHEET 1 OF 4

NOTES:


- 1) THIS DOCUMENT SHOWS THE ASSEMBLY OF MNPV6 DISCO AND REFERENCES MNPV6 DISCO-250 THE DIFFERENCES ARE ITEM 23, ITEM 27 AND ITEM 26.
- * ITEM 23 ON MNPV6 DISCO-250 IS 3-175-1
- * ITEM 26 ON MNPV6 DISCO-250 IS QUANTITY 1, INSTEAD OF 2
- * ITEM 27 ON MNPV6 DISCO-250 IS QUANTITY 1, INSTEAD OF 2
- 2) BREAKERS ARE SHOWN FOR REFERENCE ONLY AND ARE TO BE PROVIDED BY CUSTOMER

REVISION HISTORY			
REV.	DESCRIPTION OF CHANGE	DATE	SIGN



PARTS LIST			
ITEM	QTY	PART NUMBER	DESCRIPTION
31	9	10-025-1	*Varies*
23	1	3-042-1	REV A MNPV6 BUSBAR
6	1	3-043-1	REV A MNPV6 DIN RAIL
40	1	3-372-10	REV F MNPV6 DISCO CHASSIS
24	2	5-015-2	REV D WHITE INSULATOR BUSBAR
7	1	5-019-1	REV D MNPV6 DISCO DEADFRONT
21	1	5-021-1	REV A INSUL. DINRAIL FUSE HOLDER
22	1	5-022-1	REV A INSUL. PV BUSBAR
9	1	5-054-1	REV E MNPV6 DISCO SLIDER
43	2	6-016-1	KEPS NUT 10-32 SS
18	4	6-017-1	INT. STAR WASHER NO.10 SS
25	2	6-037-1	SCREW SMS 10-32 X.313 PHP SS
41	3	6-049-1	.125 IN. DIA. BY .125-.250 AL. RIVET
27	2	6-059-1	SCREW 10-32 X .250 PHP SS
42	2	6-065-1	SCREW 10-32 X .5 FHP SS
19	2	9-037-1	REV B CAL FASTENER C71498001
26	2	9-075-1	CAL FASTENER CA5SP
1	6	MNEPV BREAKER	MNEPV BREAKER

ALL TOLERANCES, UNLESS OTHERWISE STATED: x.xxx=+/-0.005" x.xx=+/-0.01" x.x=+/-0.05"		DRAWN Bob Q	3/28/2013
ALL ANGLES = +/- 1° UNLESS OTHERWISE STATED		CHECKED	
MATERIAL:	STANDARDS:	QA	
FINISH:		MFG	
PROCESS:		APPROVED	

MIDNITE SOLAR, INC 

TITLE
MNPV6 REV B DISCO 3R

SIZE B	PROJECT: MNPV6 DISCO 3R	DWG NO MNPV6 REV B DISCO 3R	REV B
-----------	----------------------------	--------------------------------	----------

E-FILE: MNPV6 DISCO CHASSIS ASSY.iam SHEET 2 OF 4

B

A

REVISION HISTORY

REV.	DESCRIPTION OF CHANGE	DATE	SIGN
------	-----------------------	------	------

REWORK INSTRUCTION FOR FIRST PRODUCTION UNITS;

- °TOP COVER MUST BE PUNCHED FOR DETENTS
- °LOCK BASE MUST BE FILED TO PREVENT DAMAGE TO HANDLE
- °GREEN SLIDERS WILL BE REPLACE WITH BLACK SLIDERS, ONCE THEY ARRIVE
- °ADD CERTIFICATION LABEL OVER SIDE KNOCK OUTS UNTIL NEW CHASSIS'S ARE AVAILABLE

BOXING INSTRUCTIONS:


- ° BOX PART NUMBER IS 9-290-1
- ° CORNER PART NUMERS IS 9-209-2, 4X
- ° INSTALL IN 18" X 24" CLEAR PLASTIC BAG TO PROTECT HANDLE
- ° MARK OUTSIDE OF BOX IN DESIGNATED AREA, AS EITHER EMPTY OR WITH FUSE VALUES

B

B

A

A

ALL TOLERANCES, UNLESS OTHERWISE STATED: x.xxx= +/-0.005" x.xx= +/-0.01" x.x= +/-0.05" ALL ANGLES = +/- 1° UNLESS OTHERWISE STATED		DRAWN Bob Q	3/28/2013			
		CHECKED				
		QA				
		MFG				
MATERIAL:	STANDARDS:	APPROVED		TITLE		
FINISH:				MNPV6 REV B DISCO 3R		
PROCESS:				SIZE B	PROJECT: MNPV6 DISCO 3R	DWG NO MNPV6 REV B DISCO 3R
			E-FILE:	SHEET 4 OF 4		

B

A