

# A73 gPV 1000 VDC Fuse 10x38 mm



### FEATURES:

- 1000 VDC, 10x38 mm PV fuse link
- Rated Current: 1-30 A
- Breaking Capacity: 30 kA at 1000 VDC
- Time Constant: 1-3 ms
- Special design with silver plated caps for high-power PV applications
- Standards: UL 248-19
- Approvals: UL (File: E490190)
- BH100-01, BH100-02 holders for DIN rail mounting

### ELECTRICAL SPECIFICATIONS

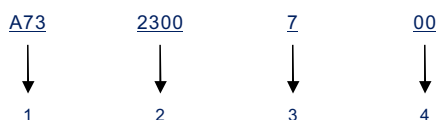
Part Number				Rated Current	Ampere Code	Breaking Capacity	I <sup>t</sup> (A <sup>2</sup> s)		Dissipation (W)		Certifications
Cartridge	Central Mount	Level Mount	PCB Mount				Pre-Arcing	Total	0.8 In	1.0 In	UL
A731100700	A731100701	A731100702	A731100703	1 A	1100	30 kA@1000 VDC	0.15	0.4	0.8	1.5	●
A731200700	A731200701	A731200702	A731200703	2 A	1200		1.3	3.4	0.7	1.1	●
A731300700	A731300701	A731300702	A731300703	3 A	1300		4	12	0.8	1.3	●
A731400700	A731400701	A731400702	A731400703	4 A	1400		10	28	1.1	1.4	●
A731500700	A731500701	A731500702	A731500703	5 A	1500		19	50	1.1	1.4	●
A731600700	A731600701	A731600702	A731600703	6 A	1600		32	93	1.2	1.8	●
A731800700	A731800701	A731800702	A731800703	8 A	1800		85	205	1.2	2.2	●
A732100700	A732100701	A732100702	A732100703	10 A	2100		30	70	1.3	2.3	●
A732120700	A732120701	A732120702	A732120703	12 A	2120		98	150	1.5	2.8	●
A732150700	A732150701	A732150702	A732150703	15 A	2150		149	230	1.8	3.0	●
A732200700	A732200701	A732200702	A732200703	20 A	2200		229	330	2.4	3.6	●
A732250700	A732250701	A732250702	A732250703	25 A	2250		411	500	2.6	4.1	●
A732300700	A732300701	A732300702	A732300703	30 A	2300		1200	2500	4.3	5.7	●

Note: (1) Typical pre-arcing I<sup>t</sup> measured at 10\*In current.

### TIME VS CURRENT CHARACTERISTIC

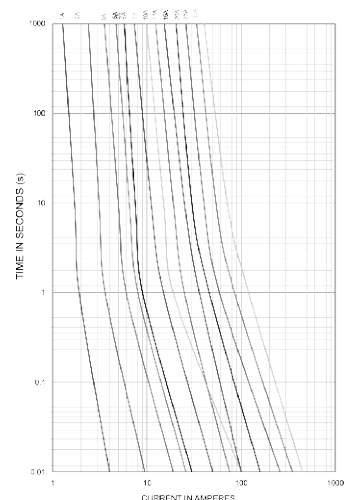
Rated Current	100 %	135 %	200 %
1-30 A	>4 h	<1 h	<4 min

### PART NUMBER SYSTEM



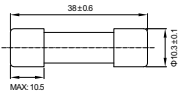
- Product Series ..... A73
- Ampere Code ..... 30 A (see Ampere code column of electrical specifications)
- Rated Voltage ..... 7: 1000 VDC
- Supplementary Code ..... 00: Cartridge; 01: Central Mount; 02: Level Mount; 03: PCB Mount

### TIME CURRENT CURVE

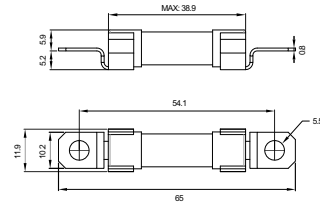


**DIMENSIONS (mm)**

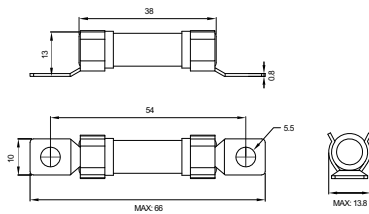
**A73xxx700**



**A73xxx701**



**A73xxx702**



**A73xxx703**

