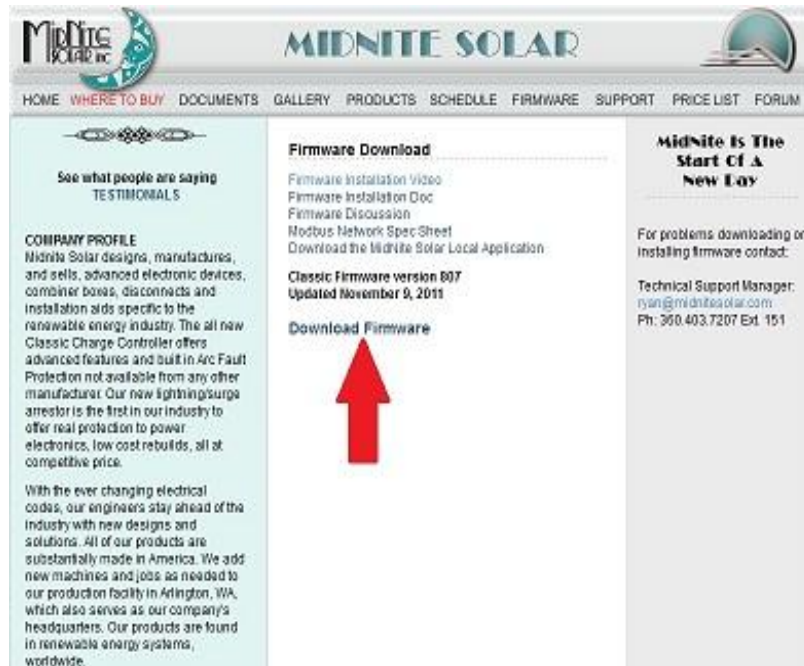


Firmware install with Windows 7

Step 1. Go to our website www.midnitesolar.com and Left Click on Firmware.



Step 2. Left Click on Download Firmware.



Step 3. Read the Notes in red first and then Left Click on Download Firmware.

MIDNITE SOLAR

HOME WHERE TO BUY DOCUMENTS GALLERY PRODUCTS SCHEDULE FIRMWARE SUPPORT PRICE LIST FORUM

COMPANY PROFILE
Midnite Solar designs, manufactures, and sells, advanced electronic devices, combiner boxes, disconnects and installation aids specific to the renewable energy industry. The all new Classic Charge Controller offers advanced features and built in Arc Fault Protection not available from any other manufacturer. Our new lightning/surge arrester is the first in our industry to offer real protection to power electronics, low cost rebuilds, all at competitive price.

With the ever changing electrical codes, our engineers stay ahead of the industry with new designs and solutions. All of our products are substantially made in America. We add new machines and jobs as needed to our production facility in Arlington, WA, which also serves as our company's headquarters. Our products are found in renewable energy systems, worldwide.

Firmware Download
Classic Firmware version 807
Updated November 9, 2011

NOTE:
We have added a new set point called "Maximum input amps" on existing Classics this number comes up at different values the first time firmware is installed. To change this go to Main Menu --> Charge --> Limits and change the "Input" to the desired value (Typically 30amps). Please see the Classic "Just the Facts" manual for more info on this.

Download Firmware
For problems downloading or installing firmware contact:
Technical Support Manager:
ryan@midnitesolar.com
Ph: 360.403.7207 Ext. 151

Firmware Updates:
Here's new Classic code. Latest update, Nov 9, 2011

This Firmware version adds:

- Maximum input current limit adjustment added to the Limits menu
- Hydro MPPT Node now has a Minimum Input

Midnite Is The Start Of A New Day
For problems downloading or installing firmware contact:
Technical Support Manager:
ryan@midnitesolar.com
Ph: 360.403.7207 Ext. 151

Step 4. Left Click on Save File. (Note these screen shots are done with Mozilla Firefox see alternate browsers.)

MIDNITE SOLAR

HOME WHERE TO BUY DOCUMENTS GALLERY PRODUCTS SCHEDULE FIRMWARE SUPPORT PRICE LIST FORUM

COMPANY PROFILE
Midnite Solar designs, manufactures, and sells, advanced electronic devices, combiner boxes, disconnects and installation aids specific to the renewable energy industry. The Classic Charge Controller offers advanced features and built in Arc Fault Protection not available from any other manufacturer. Our new lightning/surge arrester is the first in our industry to offer real protection to power electronics, low cost rebuilds, all at competitive price.

With the ever changing electrical codes, our engineers stay ahead of the industry with new designs and solutions. All of our products are substantially made in America. We add new machines and jobs as needed to our production facility in Arlington, WA, which also serves as our company's headquarters. Our products are found in renewable energy systems, worldwide.

Firmware Download
Classic Firmware version 807
Updated November 9, 2011

NOTE:
We have added a new set point called "Maximum input amps" on existing Classics this number comes up at different values the first time firmware is installed. To change this go to Main Menu --> Charge --> Limits and change the "Input" to the desired value (Typically 30amps). Please see the Classic "Just the Facts" manual for more info on this.

Download Firmware
For problems downloading or installing firmware contact:
Technical Support Manager:
ryan@midnitesolar.com
Ph: 360.403.7207 Ext. 151

Firmware Updates:
Here's new Classic code. Latest update, Nov 9, 2011

This Firmware version adds:

- Maximum input current limit adjustment

Midnite Is The Start Of A New Day
For problems downloading or installing firmware contact:
Technical Support Manager:
ryan@midnitesolar.com
Ph: 360.403.7207 Ext. 151

Opening MidNiteSolarSetup_11-9-2011.exe

You have chosen to open

MidNiteSolarSetup_11-9-2011.exe
which is a: Binary File (2.0 MB)
from: http://www.midnitesolar.com

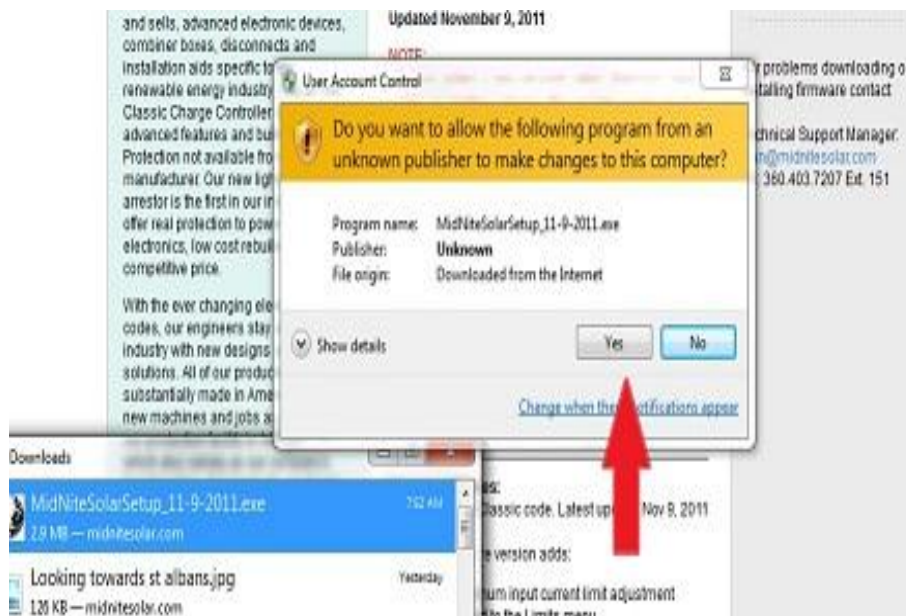
Would you like to save this file?

Save File Cancel

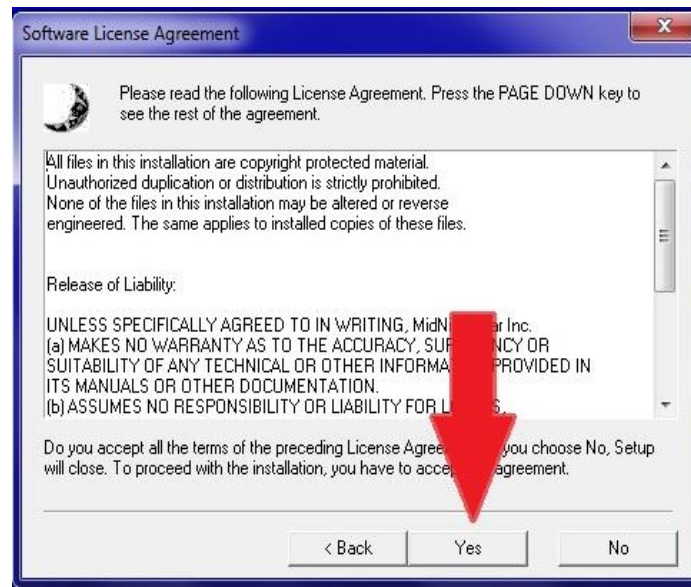
Step 5. After the Download, Windows 7 should leave a box like this. If not go to your Documents and Downloads and you will find it there. Double Left Click on the MidNite Solar file.



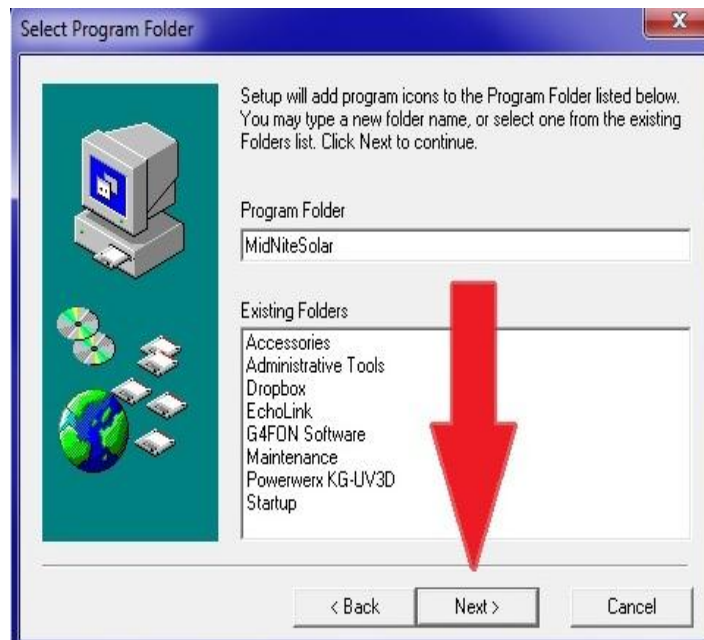
Step 6. You will be asked by windows if it is ok to download. You may also be asked by your antivirus if it is ok as well. Left Click Yes to continue.



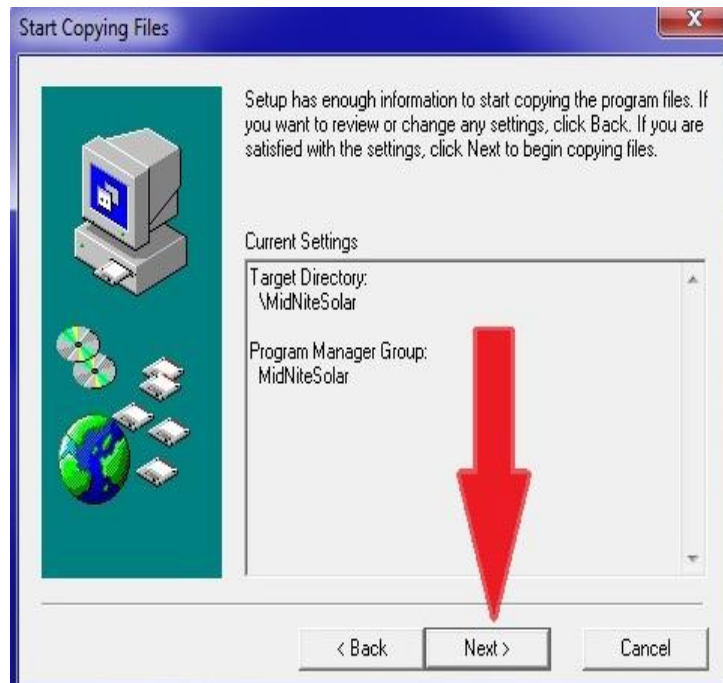
Step 7. After reading the License Agreement Left Click Yes.



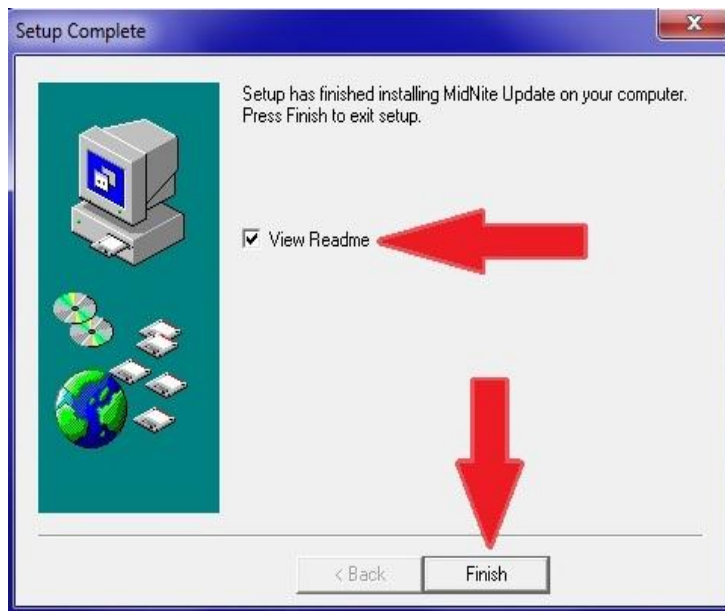
Step 8. Make sure the file is saving as shown below. Windows should select this for you. Left Click Next.



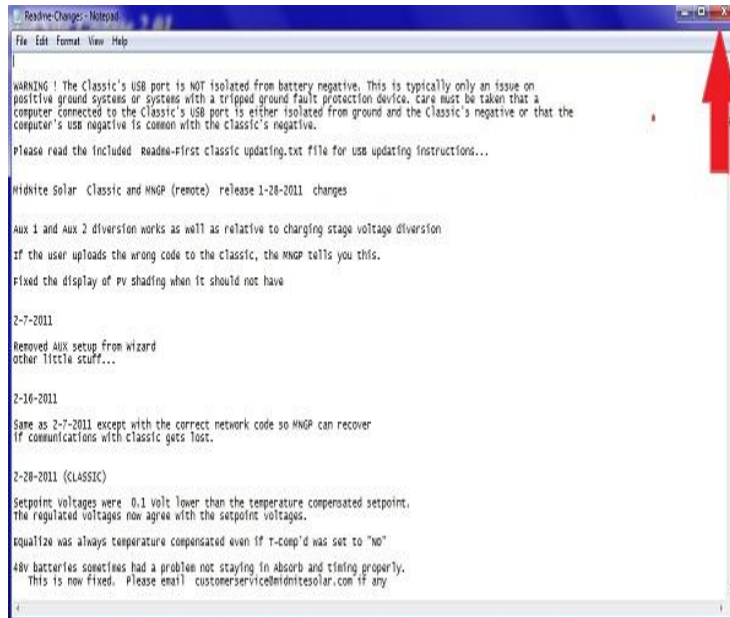
Step 9. Left Click Next



Step 10. View Read Me file should be checked and Left Click Finish



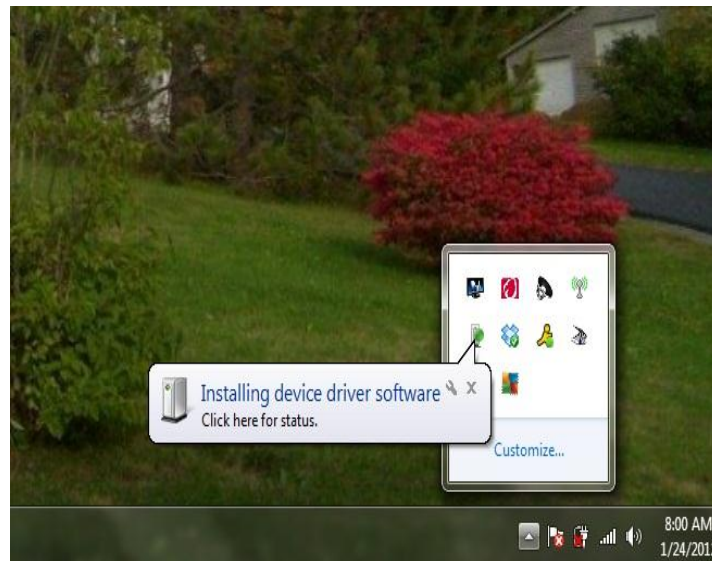
Step 11. The Read Me file will open and we encourage you to scroll down and see what changes have been made. After reading all the info simply Left Click the Red X.



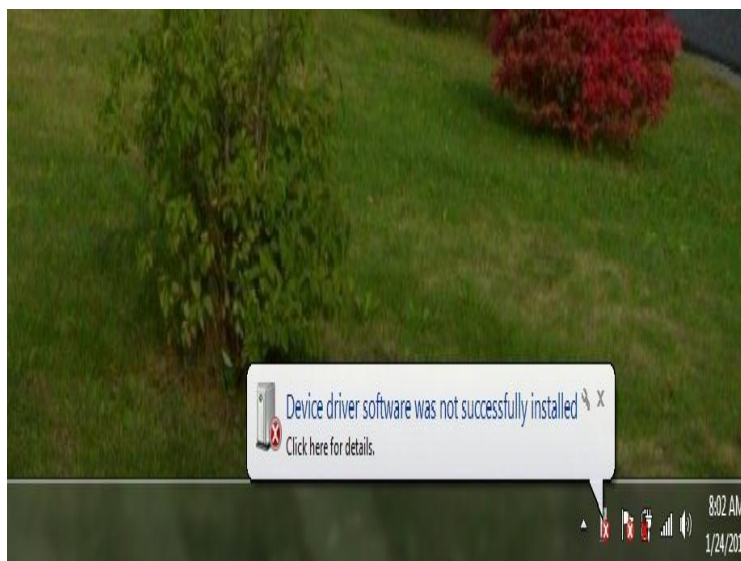
Step 12. You will now need to have the USB cable that came with the Classic and we will assume it is already plugged into the USB jack in the Classic. The jack is inside the Classic case beside the Ethernet jack and the Temperature sensor plug. If you need help with this stage please consult the owner's manual.



Step 13. With the power on to the Classic, plug the other end of the USB cable into the PC you are using to install firmware. This driver window will pop up telling you it is looking for the driver.



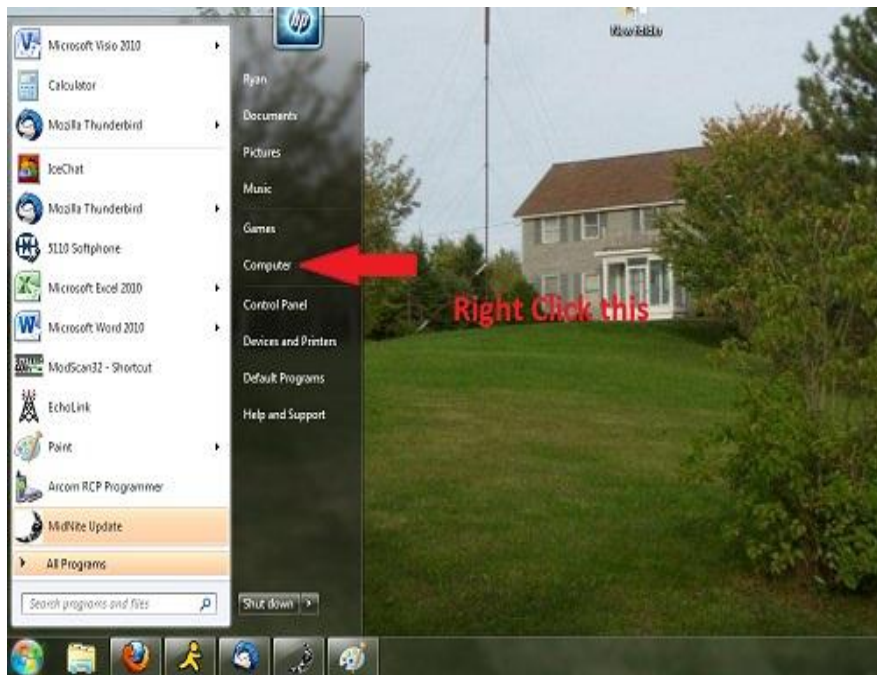
Step 14. Unfortunately Windows will not find it so wait for it to close and another warning will pop up saying the driver install failed. (Fig 1-C)



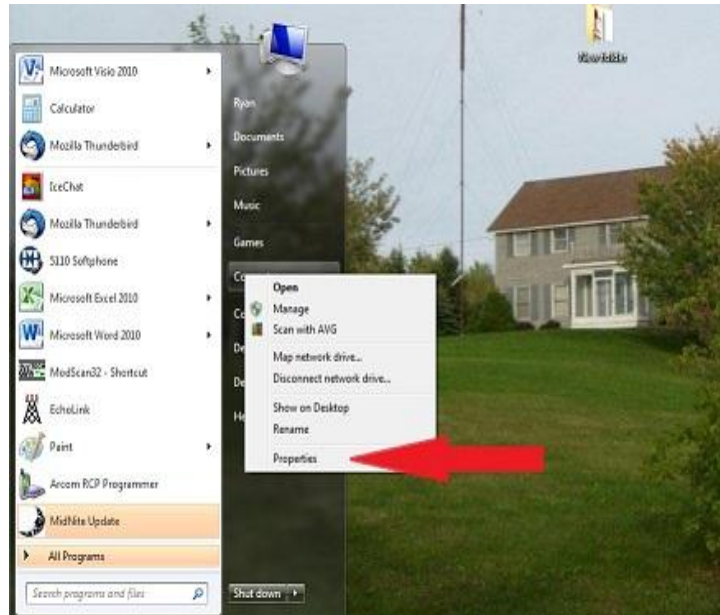
Step 15. We now need to go into the Device manager and install the driver and set the Com port to 8. All of this is only required the very first time this PC is used for this. Left Click on the little Windows Start Menu Icon.



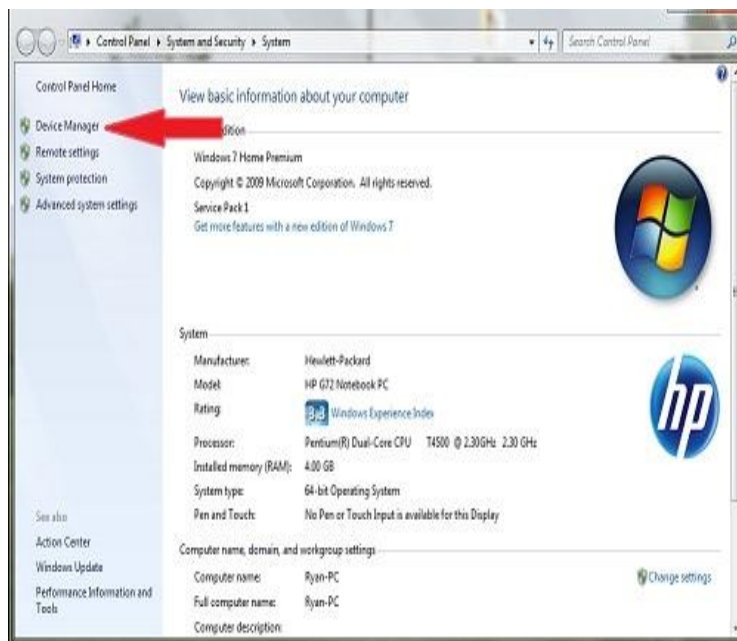
Step 16. Then Right Click on Computer.



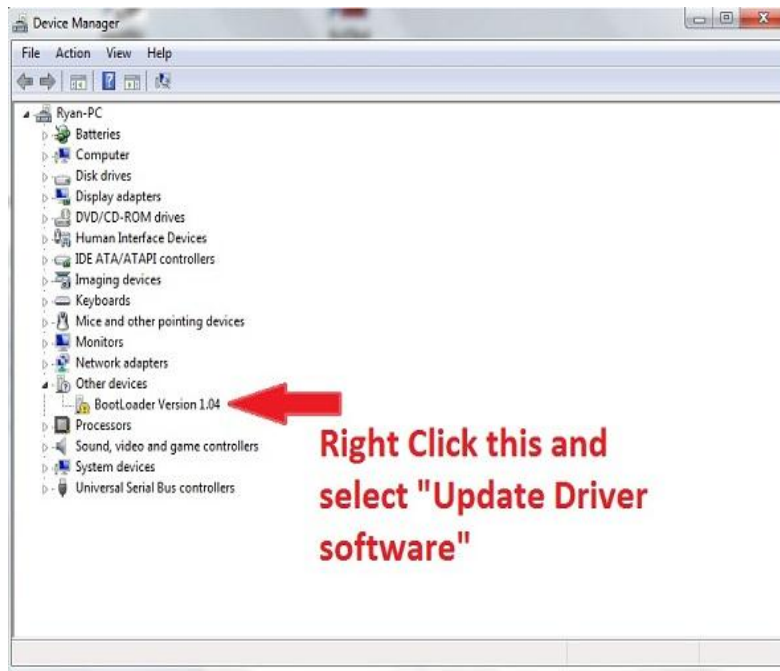
Step 17. Left Click on Properties.



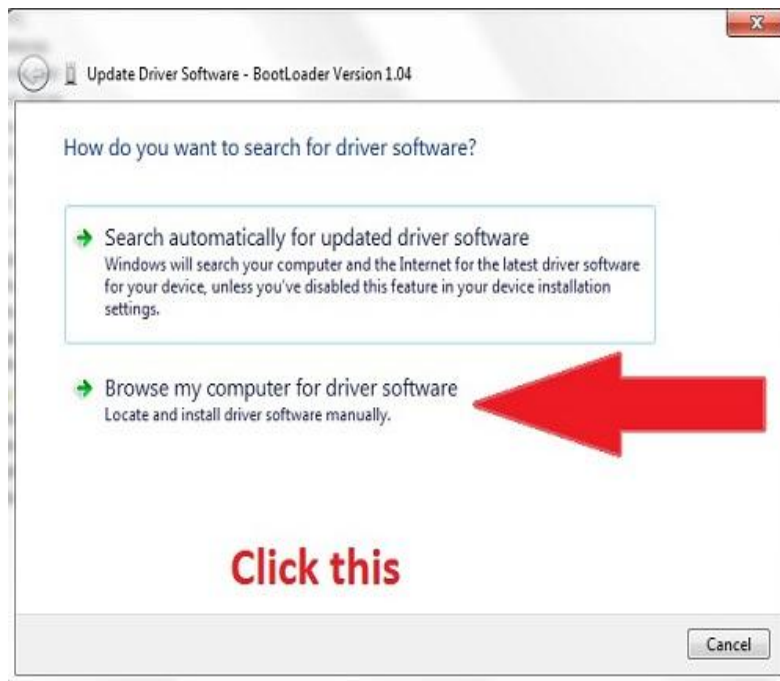
Step 18. Left Click on Device Manager.



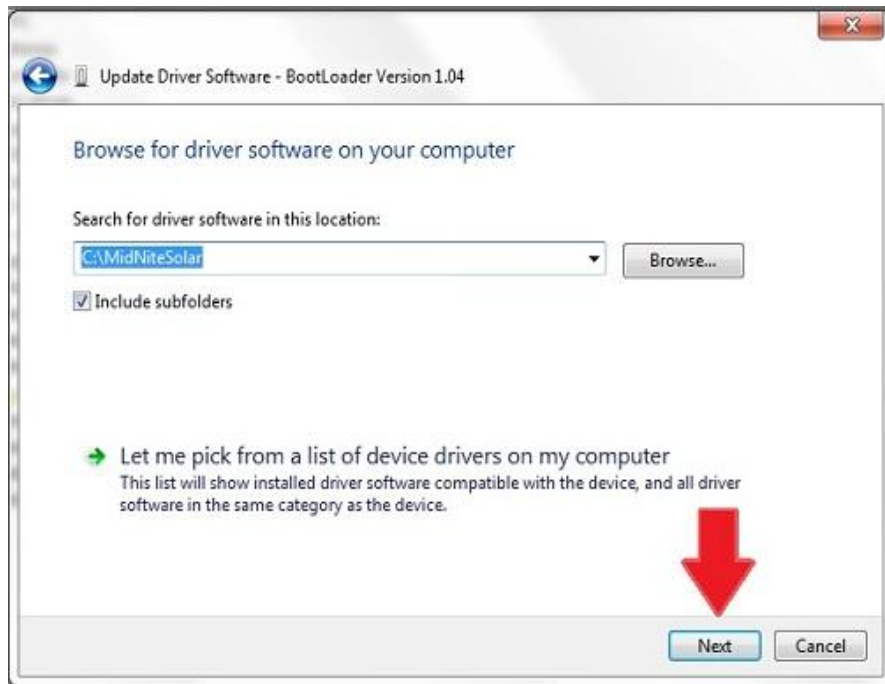
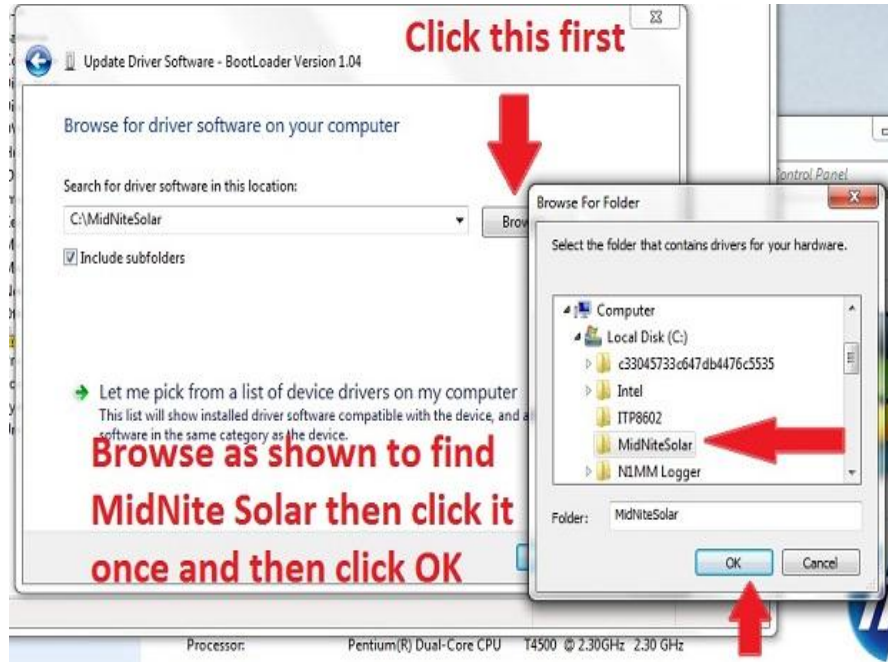
Step 19. We will need to find the Classic (BootLoader Version 1.04) in the device manager and Right Click on it and select Update Driver software.



Step 20. We will need to point it towards the MidNite Solar folder in the C drive.



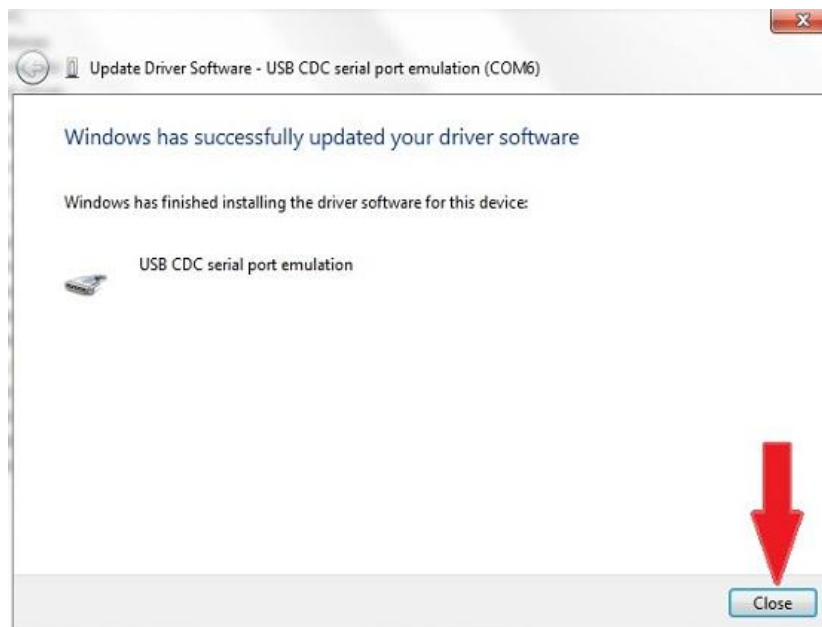
Step 21. Here we need to find the MidNitesolar Folder. Left Click on Browse. The Browse for Folder window will pop up. In this window Left Click "Computer" then Left Click "C" drive and then Left Click "MidNiteSolar" once. Now Left Click OK on this window and select Next on the underlying window.



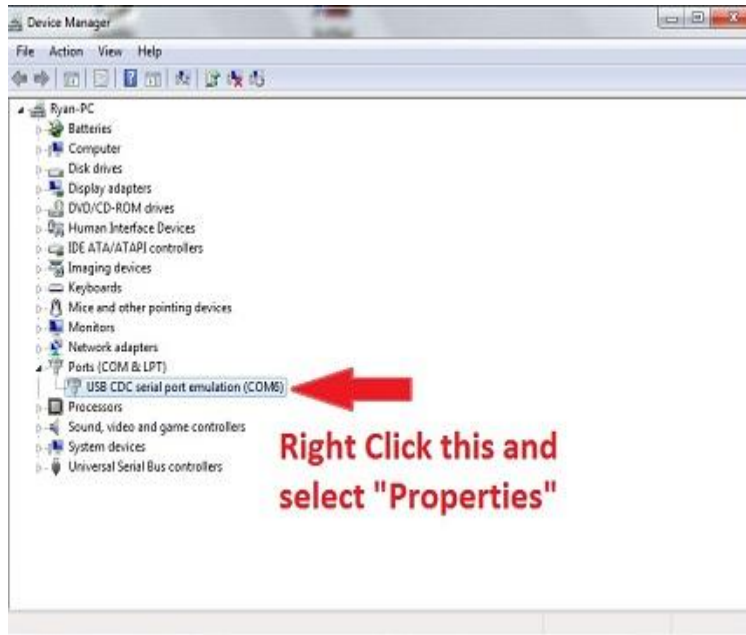
Step 22. We will most likely need to let Windows and possibly your Antivirus software know it is OK to continue.



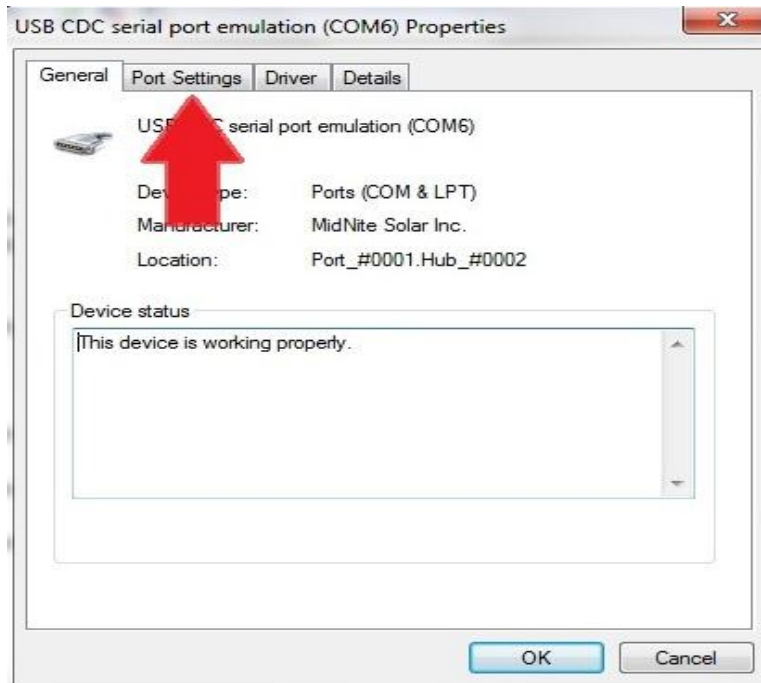
Step 23. When it is done Left Click Close.



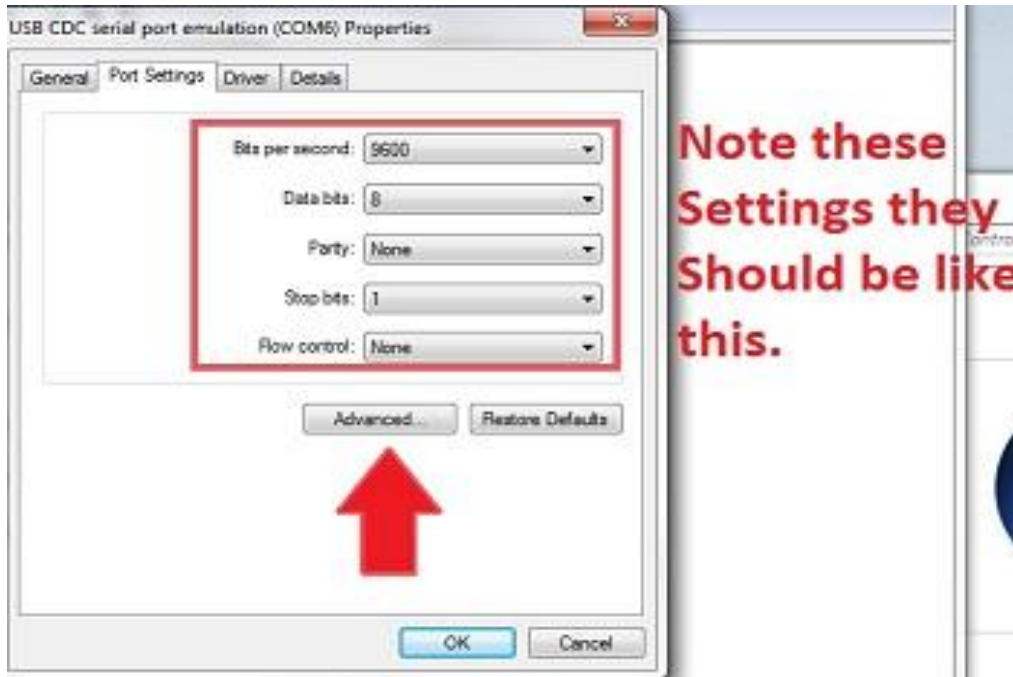
Step 24. Now we need to set the Com port to 8. Left Click on the little arrow beside Ports (COM&LPT) and then Right Click on USB CDC serial port emulation and select Properties.



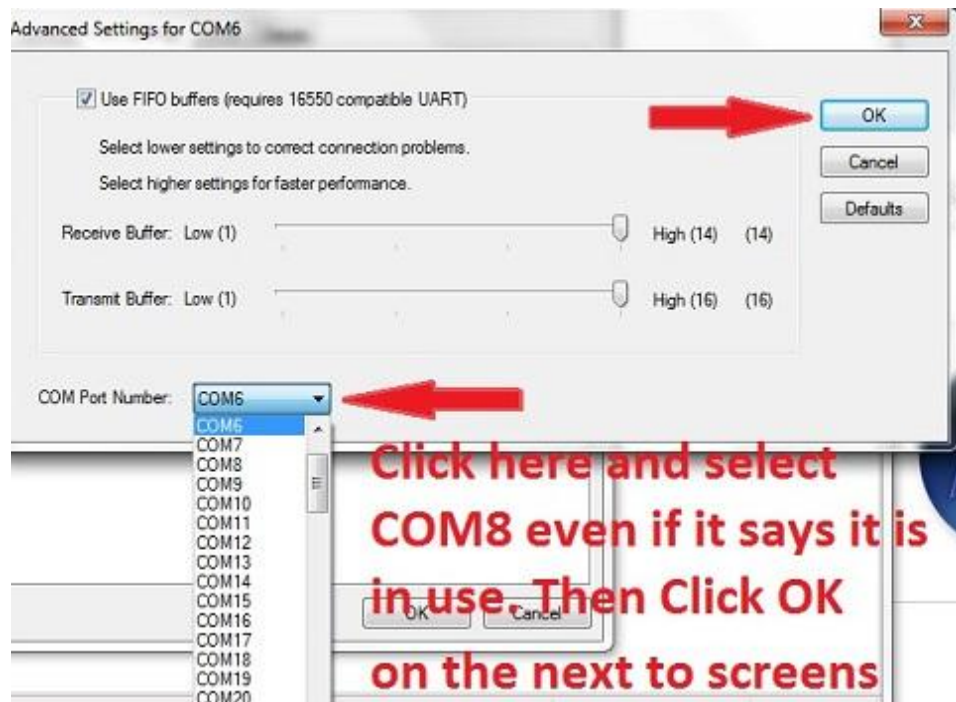
Step 25. Left Click on the port settings as shown.



Step 26. Check the settings but they should be fine by default and then Left Click the Advanced button.



Step 27. Select the Com port and switch it to 8. Then Click Ok on this window and the one below it. And simply close out of all the Device Manager related stuff.

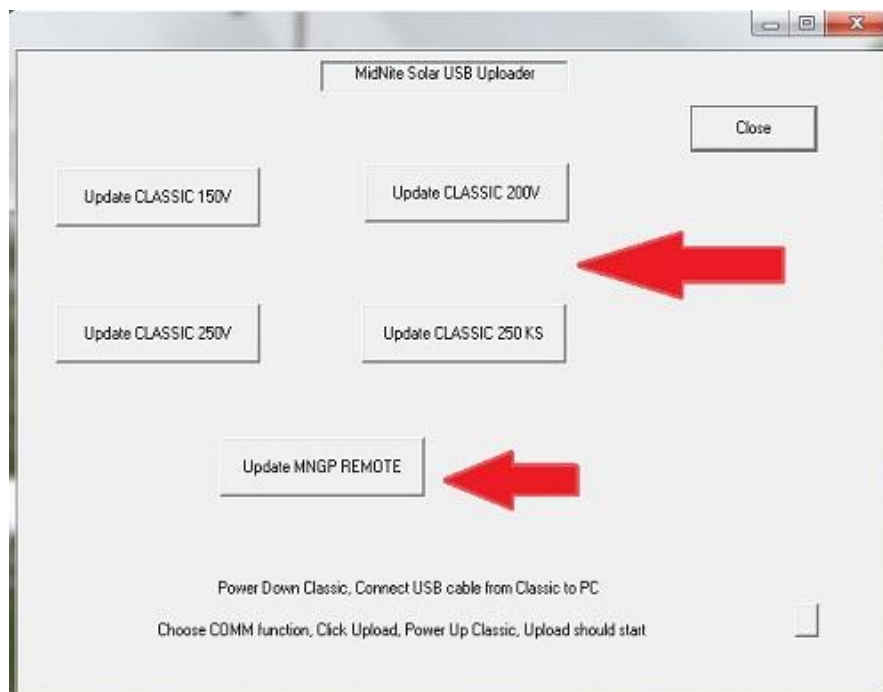


This concludes setting the PC up for the first time now we will go through the Firmware install.

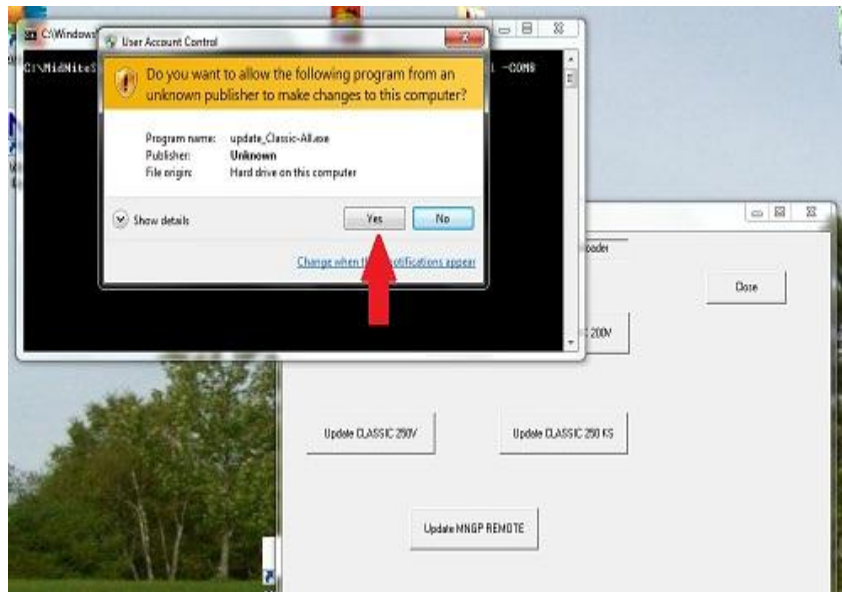
Step 28. Find the MidNite Icon and Double Left Click on it to open the program.



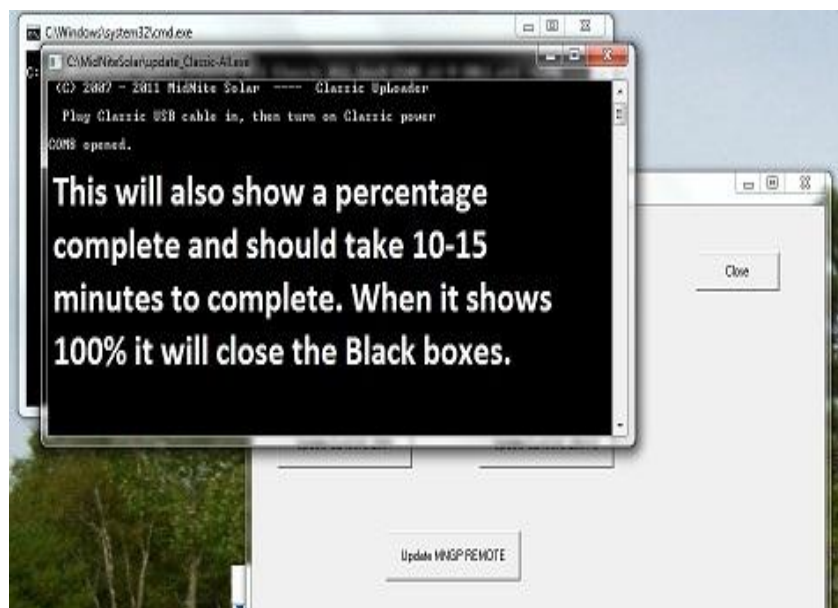
Step 29. With the Classic powered off and the USB cable plugged in you will need to select the Classic model you have. (150,200 etc)



Step 30. You will get the following windows security question Left Click Yes



Step 31. A second Black box will pop up at this time turn the power on to the Classic and the box should say Com8 Open and start counting up in percentage. (Note some times the Computer is slower then the Classic and this Com8 Opened will not pop up. In this case close the boxes and retry)



This process should take between 5-15 minutes and the box will go away when it is complete.

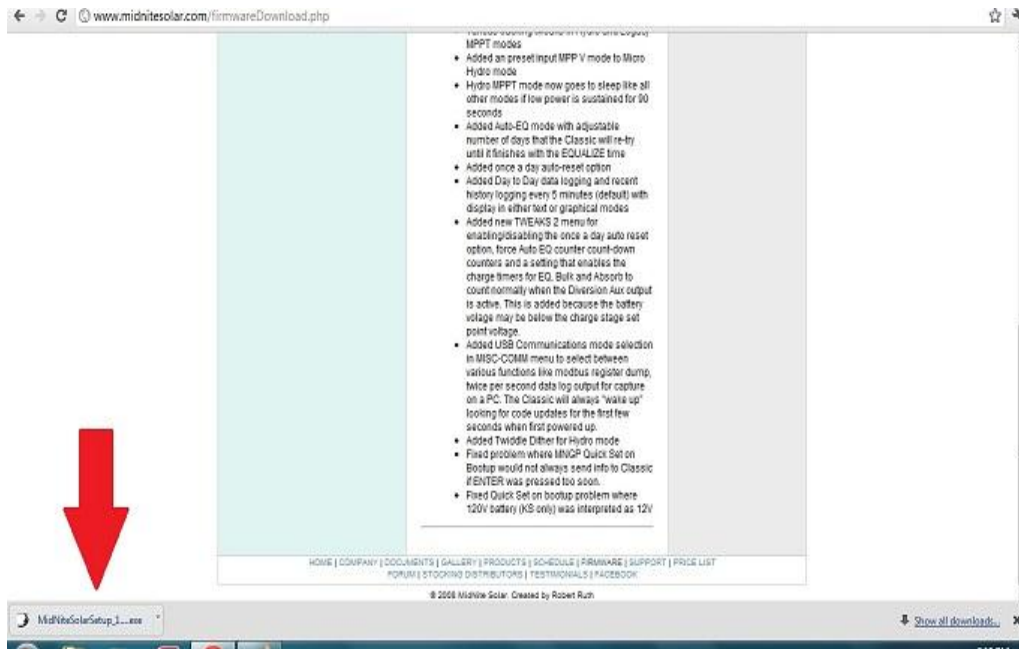
Step 32. At this point you need to power down the Classic and Left Click Update MNGP. You will get the same windows security question as before. Left Click Yes and when the second Black box pops up turn the power on to the Classic and Com8 Open should show and it will start slowly counting to 100% this will take around 15 minutes.

After the box goes away for the MNGP power off the Classic and power it back on and you should be all set. Please check all settings to ensure they did not change. None of your custom settings should change but we prefer to be safe here.

Alternate Browsers

Google Chrome

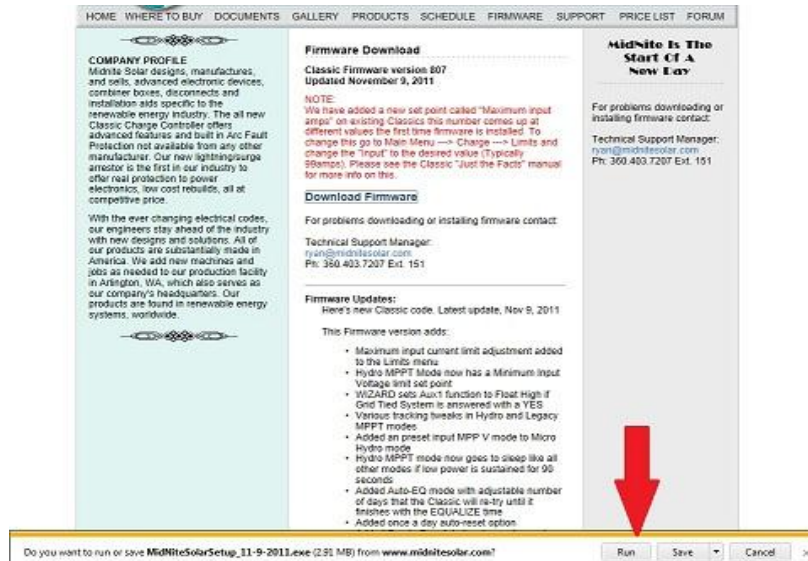
On Google Chrome when you click on download the file will show up in the bottom left of the browsers screen.



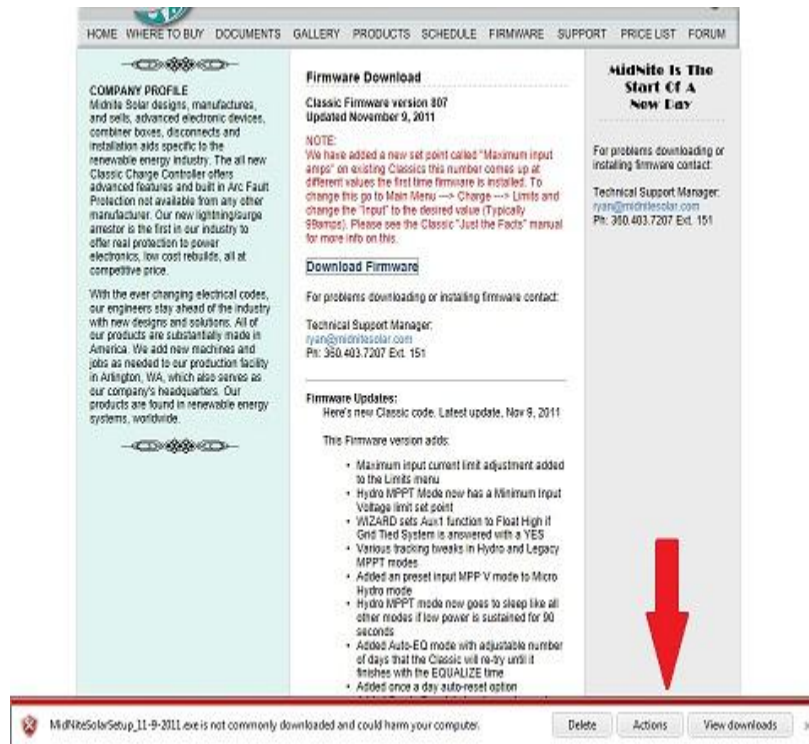
Internet Explorer 9

IE9 is a little different. It really does not want you to download stuff. Below you will find the appropriate screen shots.

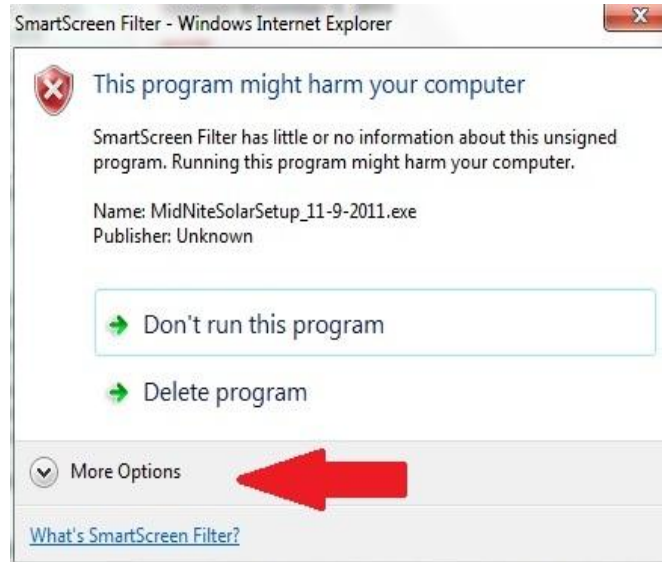
Left Click on Run



Left Click on Actions



Left Click on More Options



Left Click Run anyway. After this return to the main directions Step 6

